

## Map Unit: 2 Claypan



**Figure 1. Map Unit: 2 Claypan**

**Description:** A saline claypan subject to tidal inundation by only the highest tides. The surface forms a cracking crust on drying between inundations. It is usually devoid of vegetation, but occasional very sparse patches of samphire, such as *Sarcocornia quinqueflora* subsp. *quinqueflora*, and *Sporobolus virginicus* may occur.

**Structural Formation Range:** Not applicable.

**Basal Area Estimate  $m^2ha^{-1}$ :** 0.

**Total species recorded:** 2.

### **Ecological Notes:**

This unit occurs at the upper tidal limits and may in part become hypersaline. Many areas close to habitation are subject to gross interference by motorbikes and motor vehicles as they make excellent “skid pans” for exuberant drivers. There is an urgent need to protect them from further damage as due to the lack of ground cover they are subject to erosion once disturbed.

## Map Unit: 2 statistics and distribution maps

### 2 Claypan

Table 1. Area of Claypan (2).

Vegetation Type , ha	1955	1997	2012	2016	2020	2022
2	2990	1632	1437	1349	1262	1258



Figure 2. Extent 1955 of Claypan (2).

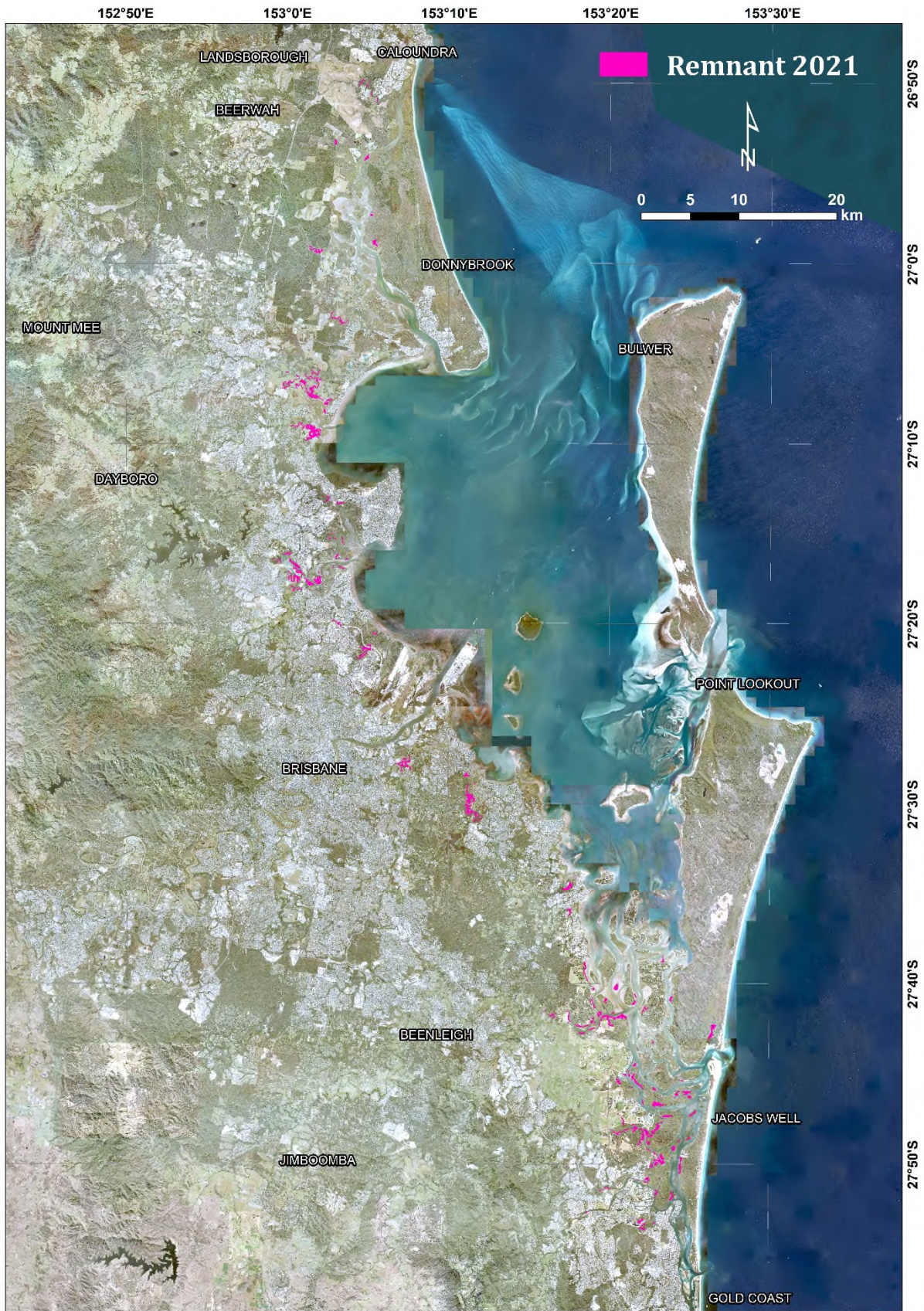


Figure 3. Remnant 2021 extent of Claypan (2).

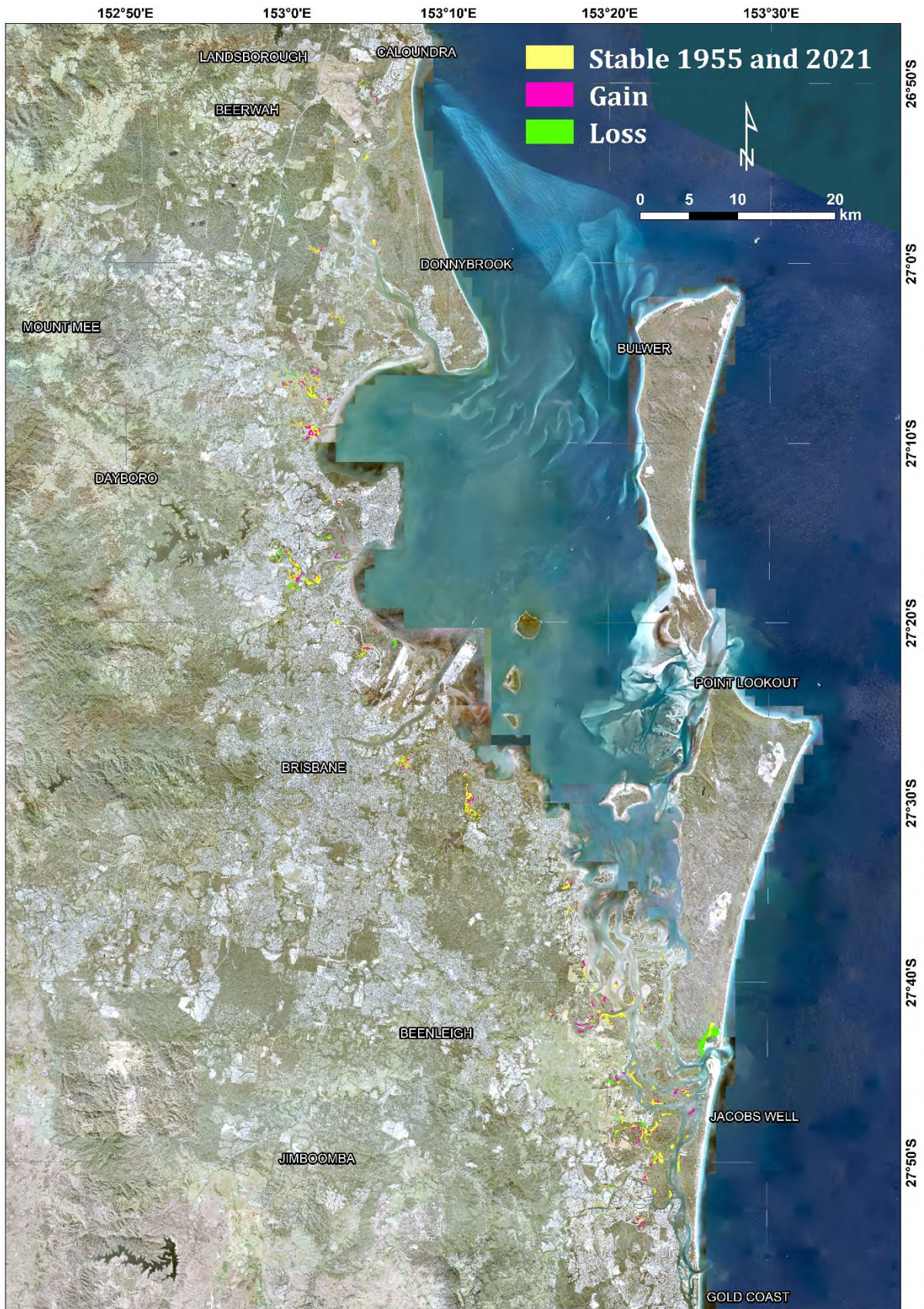


Figure 4. Change in extent between 1955 and 2021 of Claypan (2).