

Map Unit: 1D(i) *Ceriops australis* open-scrub



Figure 1. Map Unit: 1D(i) *Ceriops australis* open-scrub

Description: Usually occurring as a mid-dense canopy about 4m high dominated by *Ceriops australis*, with emergent trees of *Avicennia marina* subsp. *australasica* up to 10 m and a very sparse ground layer of young *Ceriops australis* about 30 cm tall. Occasional small trees of *Bruguiera gymnorhiza* may be present. A sparse ground layer of seedlings of *Aegiceras corniculatum*, *Avicennia marina* subsp. *australasica* and *Ceriops australis* is often present.

Structural Formation Range: closed-scrub (24%), open-scrub (53%), tall shrubland (13%), tall open-shrubland.

Basal Area Estimate m^2ha^{-1} : mean 19.9; range 6.0-33.5.

Ceriops australis ($15.6 \text{ m}^2\text{ha}^{-1}$), *Avicennia marina* subsp. *australasica* ($2.6 \text{ m}^2\text{ha}^{-1}$), *Bruguiera gymnorhiza* ($1.5 \text{ m}^2\text{ha}^{-1}$), *Aegiceras corniculatum* ($0.1 \text{ m}^2\text{ha}^{-1}$), *Rhizophora stylosa* ($0.1 \text{ m}^2\text{ha}^{-1}$).

Emergent Layer

Height: mean 6.5 m; range: 4.0-10.0 m.

Crown Cover: mean 5.5%; range: 2.0-10.0.

Frequent species: *Avicennia marina* subsp. *australasica* (50%).

Shrub Layer

Height: mean 3.0 m; range: 1.5-6.0 m.

Crown Cover: mean 62.3%; range: 5.0-98.0.

Frequent species: *Ceriops australis* (100%), *Aegiceras corniculatum* (50%), *Bruguiera gymnorrhiza* (50%), *Avicennia marina* subsp. *australasica* (25%), *Rhizophora stylosa* (25%), *Excoecaria agallocha* (12%).

Ground Layer

Height: mean 0.4 m; range: 0.1-0.7 m.

Crown Cover: mean 3.8%; range: 2.0-5.0.

Frequent species: *Ceriops australis* (62%), *Avicennia marina* subsp. *australasica* (12%), *Suaeda australis* (12%).

Total species recorded: 9. **Mean species per site:** 4 with a standard deviation of 1.

Ecological Notes:

This community is found at the upper tidal limits usually on organically rich clay soils. The organic matter in the soils is a result of leaf drop not washing away due to the height on the tidal plane which results in decreased frequency and strength of tidal flushing.

Map Unit: 1D(i) statistics and distribution maps

1D(i) *Ceriops australis* open-scrub

Table1. Area of *Ceriops australis* closed-scrub, open-scrub, tall shrubland, tall open-shrubland 1D(i).

Vegetation Type, ha	1955	1997	2012	2016	2020	2021
1D(i)	896	894	801	797	793	793

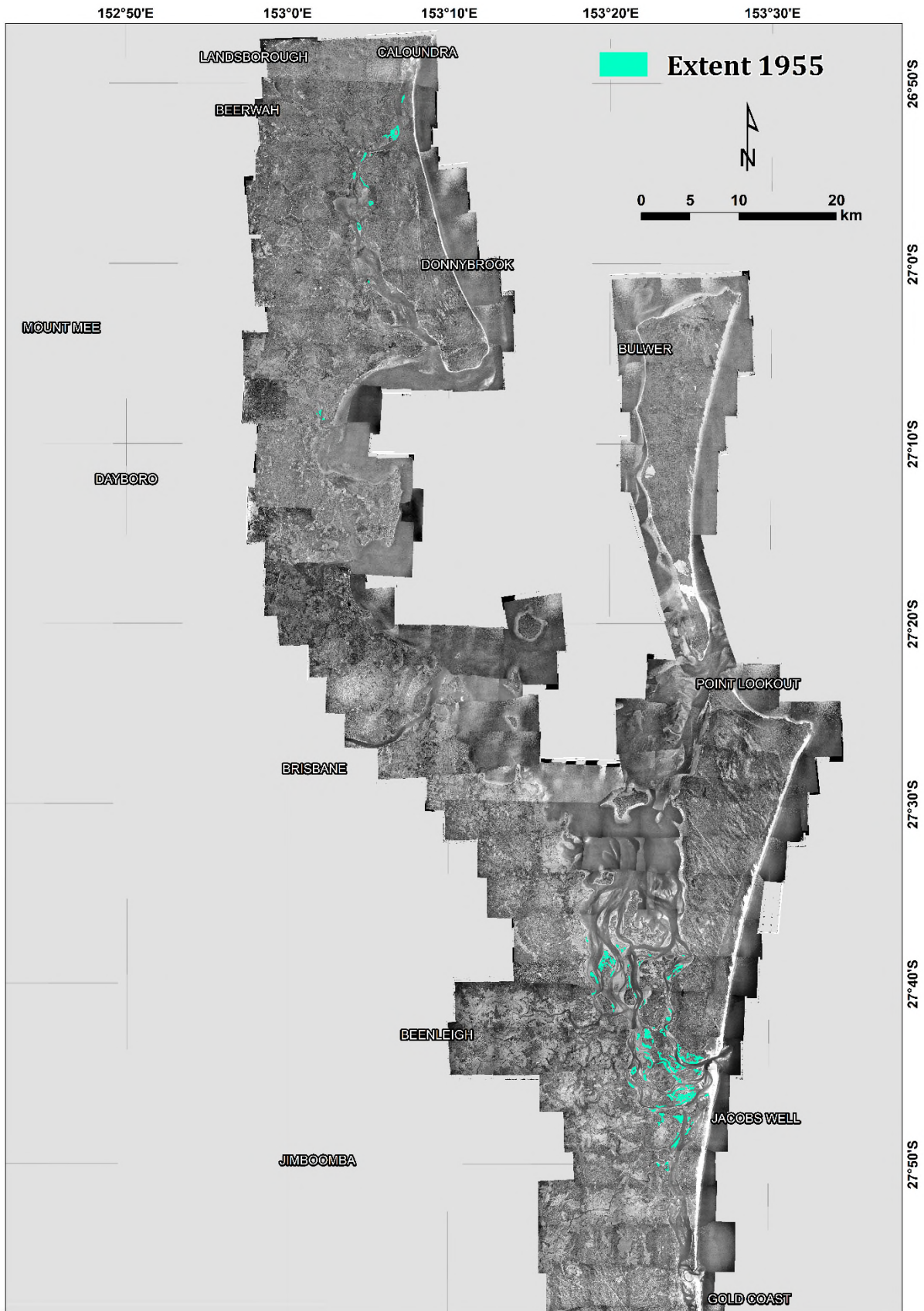


Figure 2. Extent 1955 of *Ceriops australis* closed-scrub, open-scrub, tall shrubland, tall open-shrubland (1D(i)).

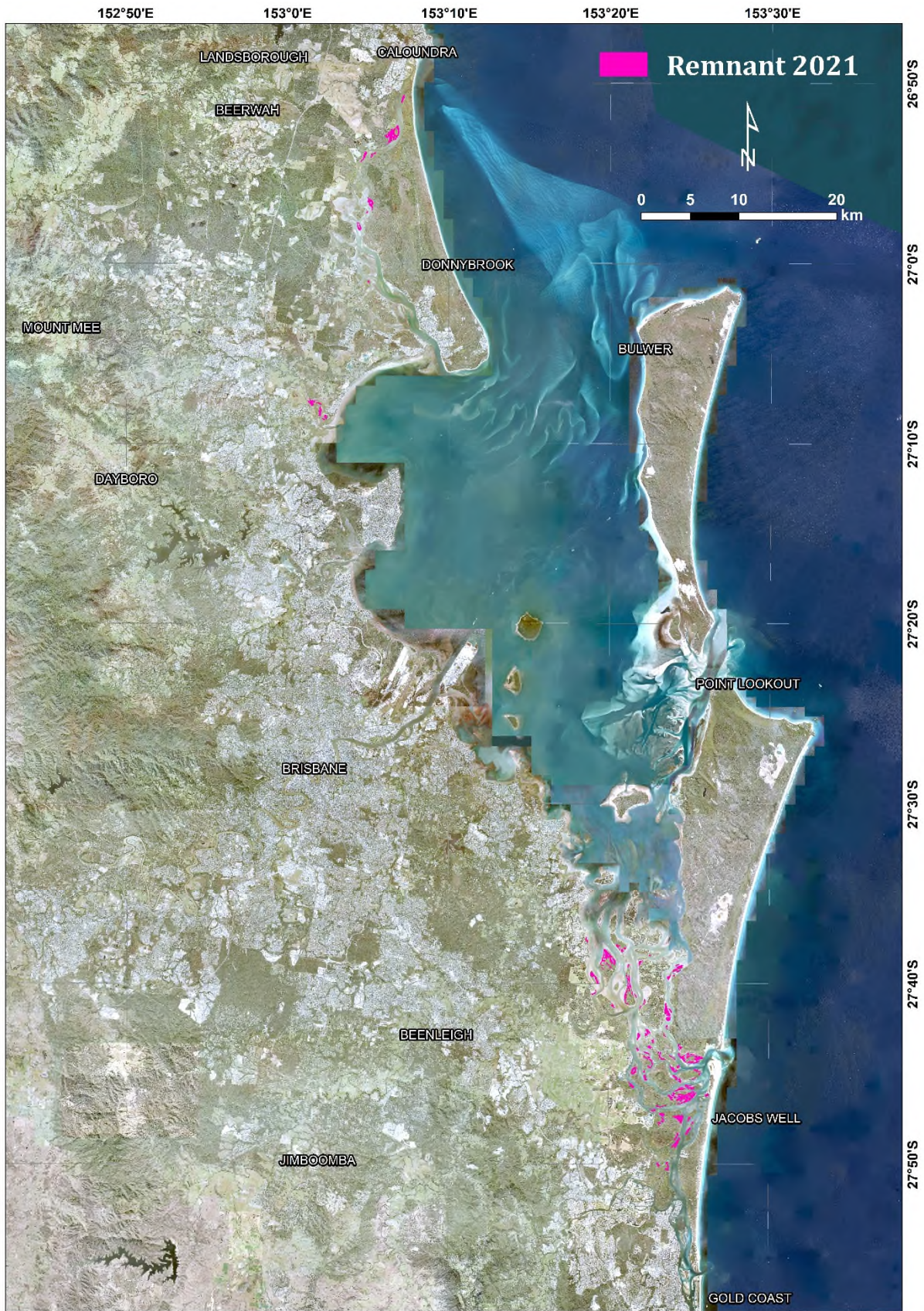


Figure 3. Remnant 2021 extent of *Ceriops australis* closed-scrub, open-scrub, tall shrubland, tall open-shrubland (1D(i)).

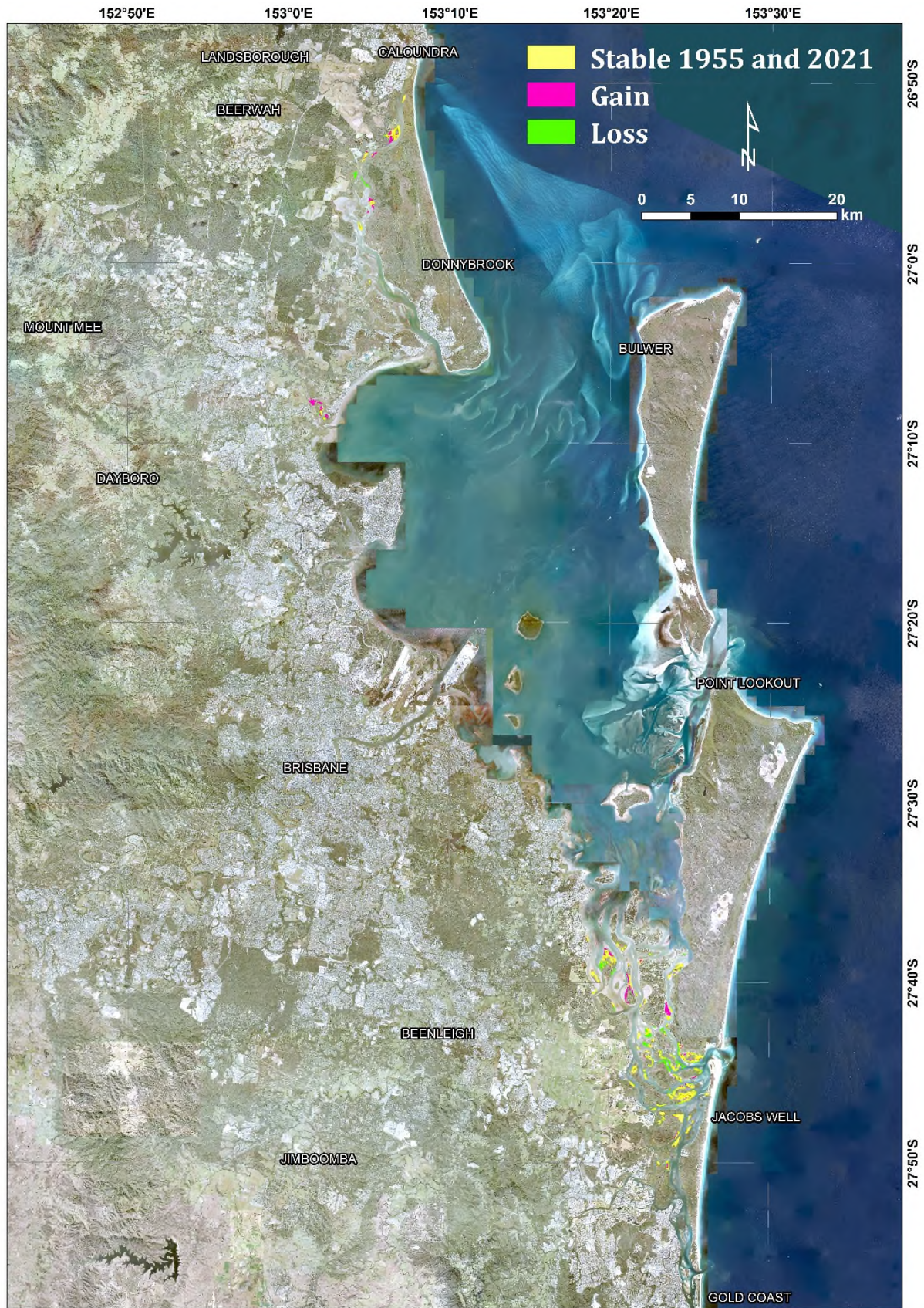


Figure 4. Change in extent between 1955 and 2021 of *Ceriops australis* closed-scrub, open-scrub, tall shrubland, tall open-shrubland (1D(i)).