

Map Unit: 1B(iii) *Avicennia marina* subsp. *australasica* low shrubland



Figure 1. Map Unit: 1B(iii) *Avicennia marina* subsp. *australasica* low shrubland

Description: An open community generally 1m high dominated by *Avicennia marina* subsp. *australasica*. A mid-dense patchy ground layer exists that is dominated by *Sporobolus virginicus* and *Suaeda arbusculoides*. Occasional emergent small trees of *Avicennia marina* subsp. *australasica* to 4m are usually present.

Structural Formation Range: low open-scrub, low shrubland (92%), low open-shrubland (8%).

Basal Area Estimate m^2ha^{-1} : mean 0.9; range 0.0-5.0.
Avicennia marina subsp. *australasica* ($0.9 \text{ m}^2\text{ha}^{-1}$).

Emergent Layer

Height: mean 3.7 m; range: 3.0-4.0 m.

Crown Cover: mean 7.5%; range: 5.0-10.0.

Frequent species: *Avicennia marina* subsp. *australasica* (25%).

Shrub Layer

Height: mean 1.2 m; range: 0.2-2.0 m.

Crown Cover: mean 30.3%; range: 15.0-58.0.

Frequent species: *Avicennia marina* subsp. *australasica* (100%), *Ceriops australis* (16%), *Rhizophora stylosa* (8%).

Ground Layer

Height: mean 0.2 m; range: 0.1-0.5 m.

Crown Cover: mean 33.3%; range: 10.0-90.0.

Frequent species: *Avicennia marina* subsp. *australasica* (41%), *Sporobolus virginicus* (41%), *Suaeda arbusculoides* (33%), *Sarcocornia quinqueflora* subsp. *quinqueflora* (16%), *Suaeda australis* (8%).

Total species recorded: 7. **Mean species per site:** 3 with a standard deviation of 1.

Ecological Notes:

This community occurs high on the tidal plane towards the upper limits and is often found adjacent to claypans and samphire flats. It also occurs in areas that are from time to time subject to freshwater influence.

Map Unit: 1B(iii) statistics and distribution maps

1B(iii) *Avicennia marina* subsp. *australasica* low shrubland

Table 1. Area of *Avicennia marina* subsp. *australasica* low open-scrub, low shrubland, low open-shrubland (1B(iii)).

| Vegetation Type, ha | 1955 | 1997 | 2012 | 2016 | 2020 | 2021 |
|---------------------|------|------|------|------|------|------|
| 1B(iii) | 1151 | 983 | 900 | 976 | 1098 | 1095 |

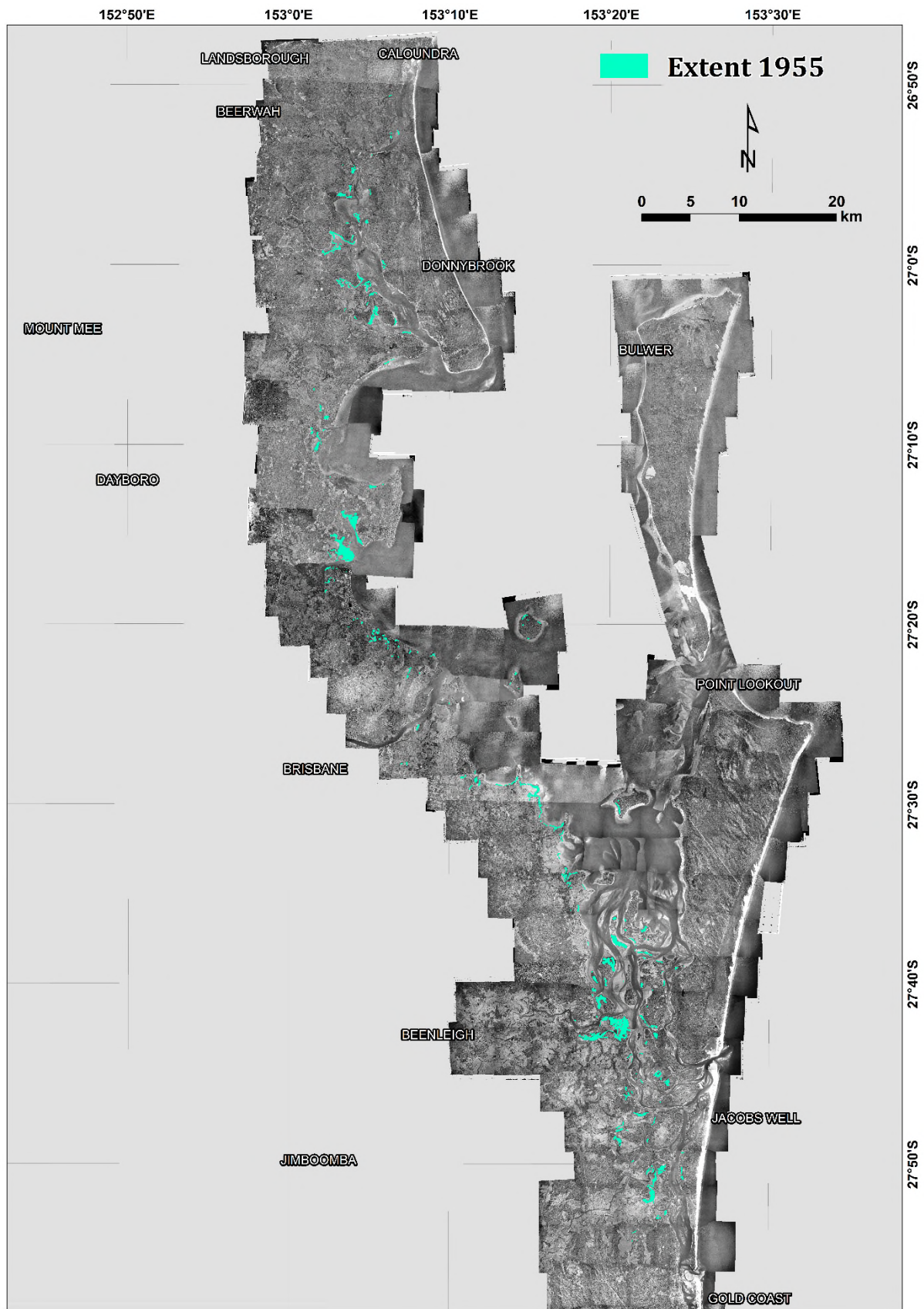


Figure 2. Extent 1955 of *Avicennia marina* subsp. *australasica* low open-scrub, low shrubland, low open-shrubland (1B(iii)).

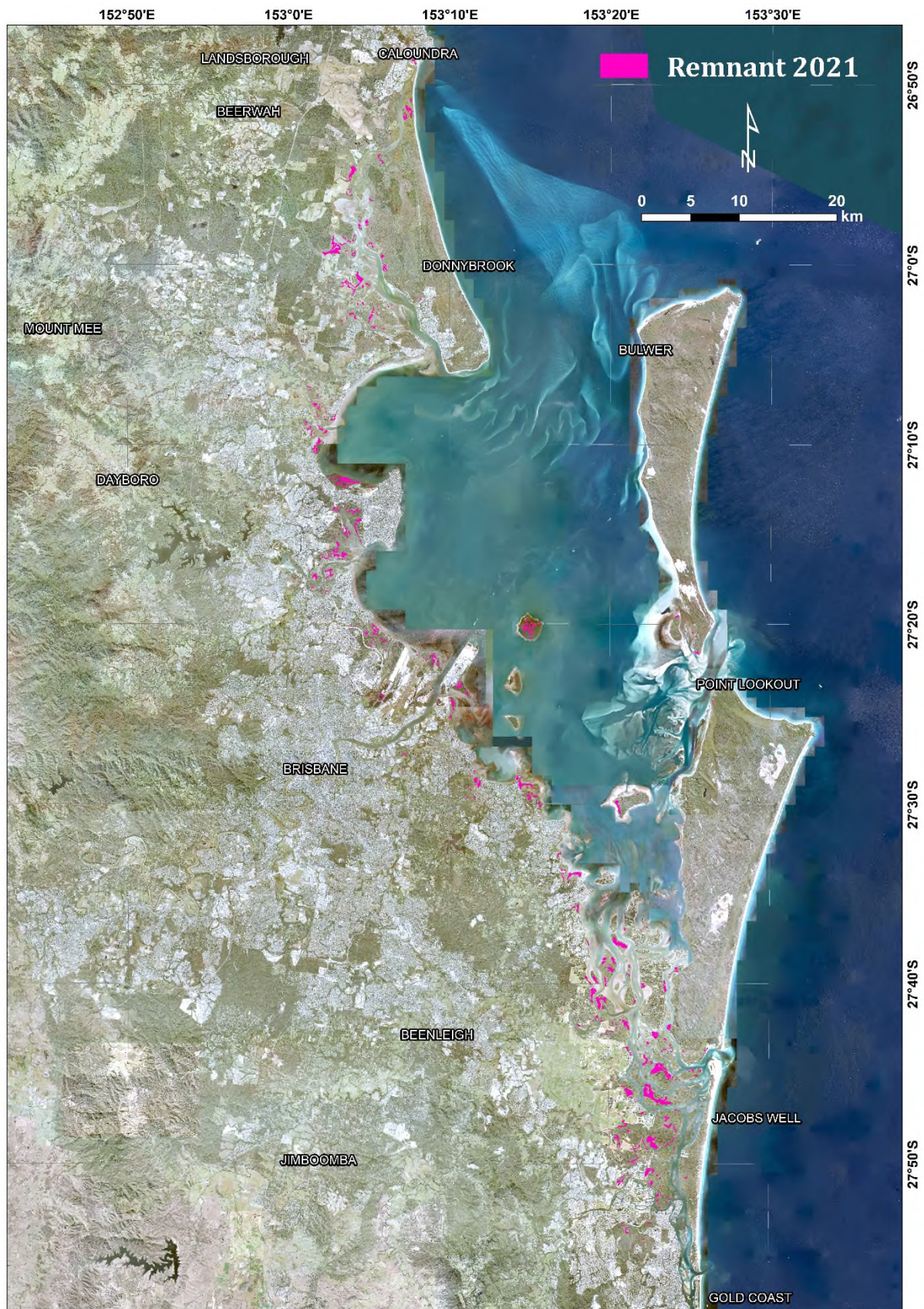


Figure 3. Remnant 2021 extent of *Avicennia marina* subsp. *australasica* low open-scrub, low shrubland, low open-shrubland (1B(iii)).



Figure 4. Change in extent between 1955 and 2021 of *Avicennia marina* subsp. *australasica* low open-scrub, low shrubland, low open-shrubland (1B(iii)).