

Map Unit: 1B(ii)b *Avicennia marina* subsp. *australasica* tall shrubland



Figure 1. Map Unit: 1B(ii)b *Avicennia marina* subsp. *australasica* tall shrubland

Description: *Avicennia marina* subsp. *australasica* predominates with the sparse canopy usually being about 3 m tall. Other mangrove species are frequently present, notably *Ceriops australis* and *Rhizophora stylosa*. There are occasional emergent trees of *Avicennia marina* subsp. *australasica* to 6 m tall. The ground layer is mid-dense and consists of *Sporobolus virginicus* and samphires.

Structural Formation Range: tall shrubland (71%), tall open shrubland (29%).

Basal Area Estimate m^2ha^{-1} : mean 3.9; range 0.0-19.0.
Avicennia marina subsp. *australasica* ($3.9 \text{ m}^2\text{ha}^{-1}$).

Emergent Layer

Height: mean 5.0 m; range: 4.0-6.0m.

Crown Cover: mean 5.0%; range: 5.0-5.0.

Frequent species: *Avicennia marina* subsp. *australasica* (9%).

Shrub Layer

Height: mean 2.5 m; range: 0.3-8.0 m.

Crown Cover: mean 24.7%; range: 2.0-69.0.

Frequent species: *Avicennia marina* subsp. *australasica* (100%), *Ceriops australis* (33%), *Rhizophora stylosa* (14%).

Ground Layer

Height: mean 0.3 m; range: 0.1-1.0 m.

Crown Cover: mean 41.6%; range: 1.0-100.0.

Frequent species: *Sporobolus virginicus* (42%), *Avicennia marina* subsp. *australasica* (38%), *Sarcocornia quinqueflora* subsp. *quinqueflora* (28%), *Suaeda australis* (23%), *Suaeda arbusculoides* (9%).

Total species recorded: 13. **Mean species per site:** 3 with a standard deviation of 2.

Ecological Notes:

This community is commonly found towards the upper tidal limits, often adjacent to or intermingled with areas of marine couch, samphires and claypans.

Map Unit: 1B(ii)b statistics and distribution maps

1B(ii)b *Avicennia marina* subsp. *australasica* tall shrubland

Table1. Area of *Avicennia marina* subsp. *australasica* tall shrubland, tall open-shrubland (1B(ii)b).

Vegetation Type, ha	1955	1997	2012	2016	2020	2021
1B(ii)b	1021	1488	1667	1707	1723	1711

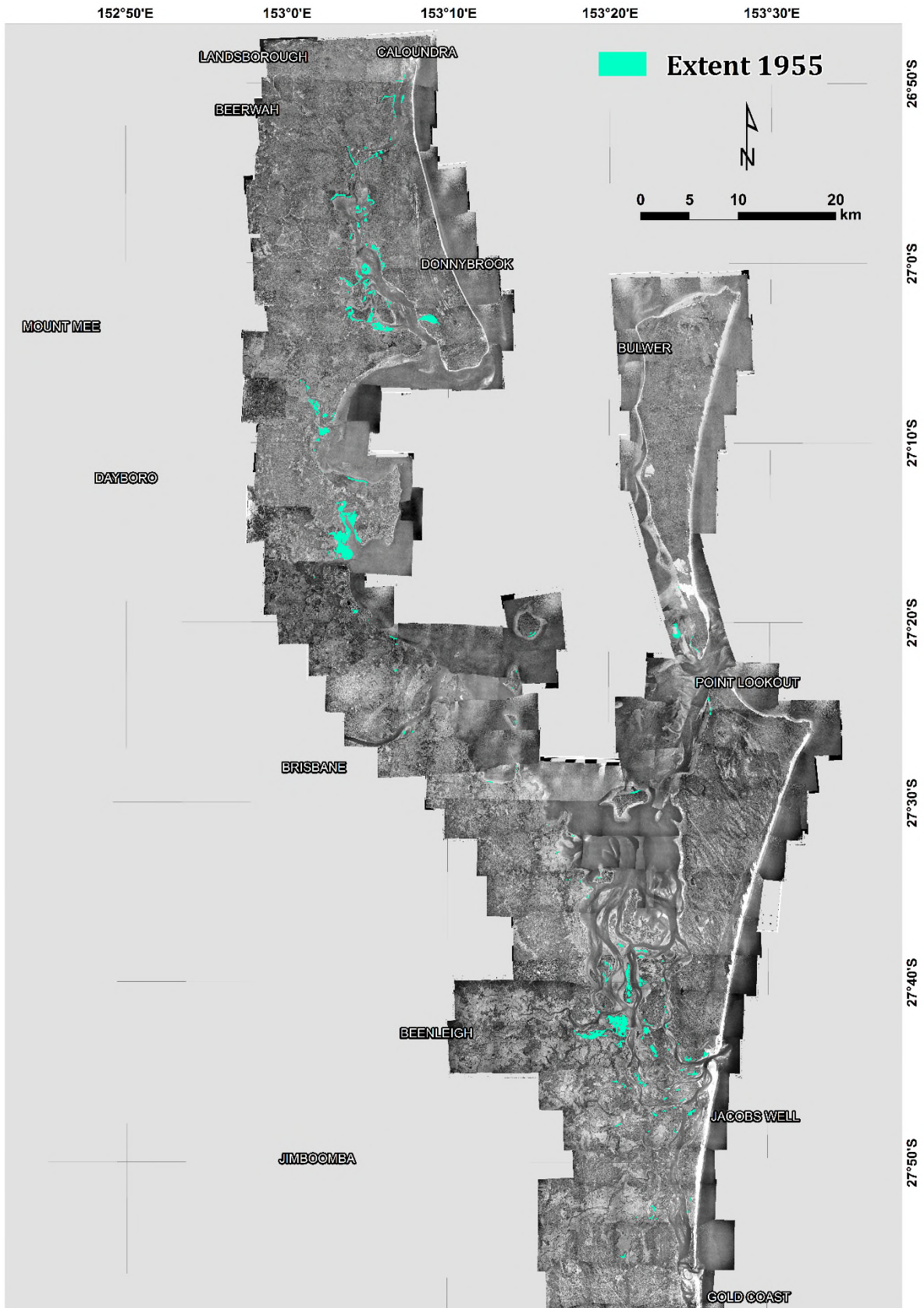


Figure 2. Extent 1955 of *Avicennia marina* subsp. *australasica* tall shrubland, tall open-shrubland (1B(ii)b).

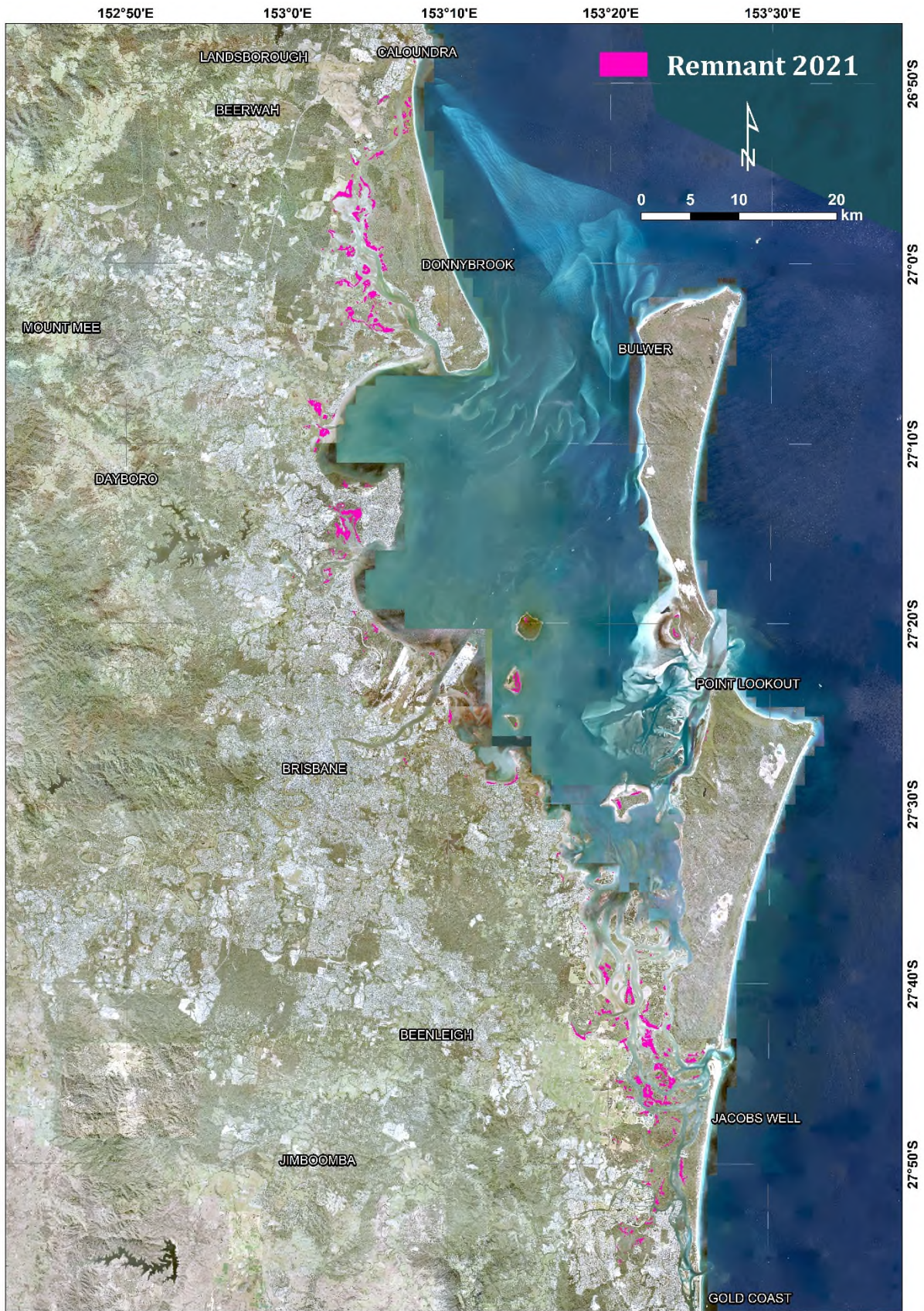


Figure 3. Remnant 2021 extent of *Avicennia marina* subsp. *australasica* tall shrubland, tall open-shrubland (1B(ii)b).



Figure 4. Change in extent between 1955 and 2021 of *Avicennia marina* subsp. *australasica* tall shrubland, tall open-shrubland (1B(ii)b).