

Map Unit: 1B(ii)a *Avicennia marina* subsp. *australasica* open-scrub



Figure 1. Map Unit: 1B(ii)a *Avicennia marina* subsp. *australasica* open-scrub

Description: This map unit consists of *Avicennia marina* subsp. *australasica*, generally about 6m tall, with occasional occurrences of other mangroves, notably *Rhizophora stylosa* and *Bruguiera gymnorhiza*. A secondary mid-dense layer of a variety of mangrove species often exists which may in places form a dense thicket. A sparse ground layer of mangrove seedlings with patches of samphire is often present.

Structural Formation Range: closed-scrub, open-scrub (97%), tall shrubland (3%).

Basal Area Estimate m²ha⁻¹: mean 12.3; range 0.0-28.5.

Avicennia marina subsp. *australasica* (9.8 m²ha⁻¹), *Aegiceras corniculatum* (1.7 m²ha⁻¹), *Rhizophora stylosa* (0.6 m²ha⁻¹), *Bruguiera gymnorhiza* (0.1 m²ha⁻¹), *Casuarina glauca* (0.1 m²ha⁻¹).

Canopy Layer

Height: mean 5.6 m; range: 2.0-12.0 m.

Crown Cover: mean 62.9%; range: 20.0-98.0.

Frequent species: *Avicennia marina* subsp. *australasica* (40%), *Rhizophora stylosa* (7%).

Shrub Layer

Height: mean 3.0 m; range: 0.3-8.0 m.

Crown Cover: mean 53.4%; range: 5.0-100.0.

Frequent species: *Avicennia marina* subsp. *australasica* (77%), *Aegiceras corniculatum* (37%), *Ceriops australis* (14%), *Rhizophora stylosa* (11%), *Bruguiera gymnorhiza* (7%).

Ground Layer

Height: mean 0.4 m; range: 0.1-1.5 m.

Crown Cover: mean 26.2%; range: 1.0-100.0.

Frequent species: *Avicennia marina* subsp. *australasica* (59%), *Aegiceras corniculatum* (14%), *Suaeda australis* (14%), *Ceriops australis* (11%), *Rhizophora stylosa* (11%), *Sarcocornia quinqueflora* subsp. *quinqueflora* (7%).

Total species recorded: 17. **Mean species per site:** 3 with a standard deviation. of 1.

Ecological Notes:

This map unit is normally found in the mid to upper tidal range.

Map Unit: 1B(ii)a statistics and distribution maps

1B(ii)a *Avicennia marina* subsp. *australasica* open-scrub

Table 1. Area of *Avicennia marina* subsp. *australasica* closed-scrub, open-scrub (1B(ii)a).

Vegetation Type, ha	1955	1997	2012	2016	2020	2021
1B(ii)a	4127	3868	4008	3944	3926	3907



Figure 2. Extent 1955 of *Avicennia marina* subsp. *australasica* closed-scrub, open-scrub, (1B(ii)a).

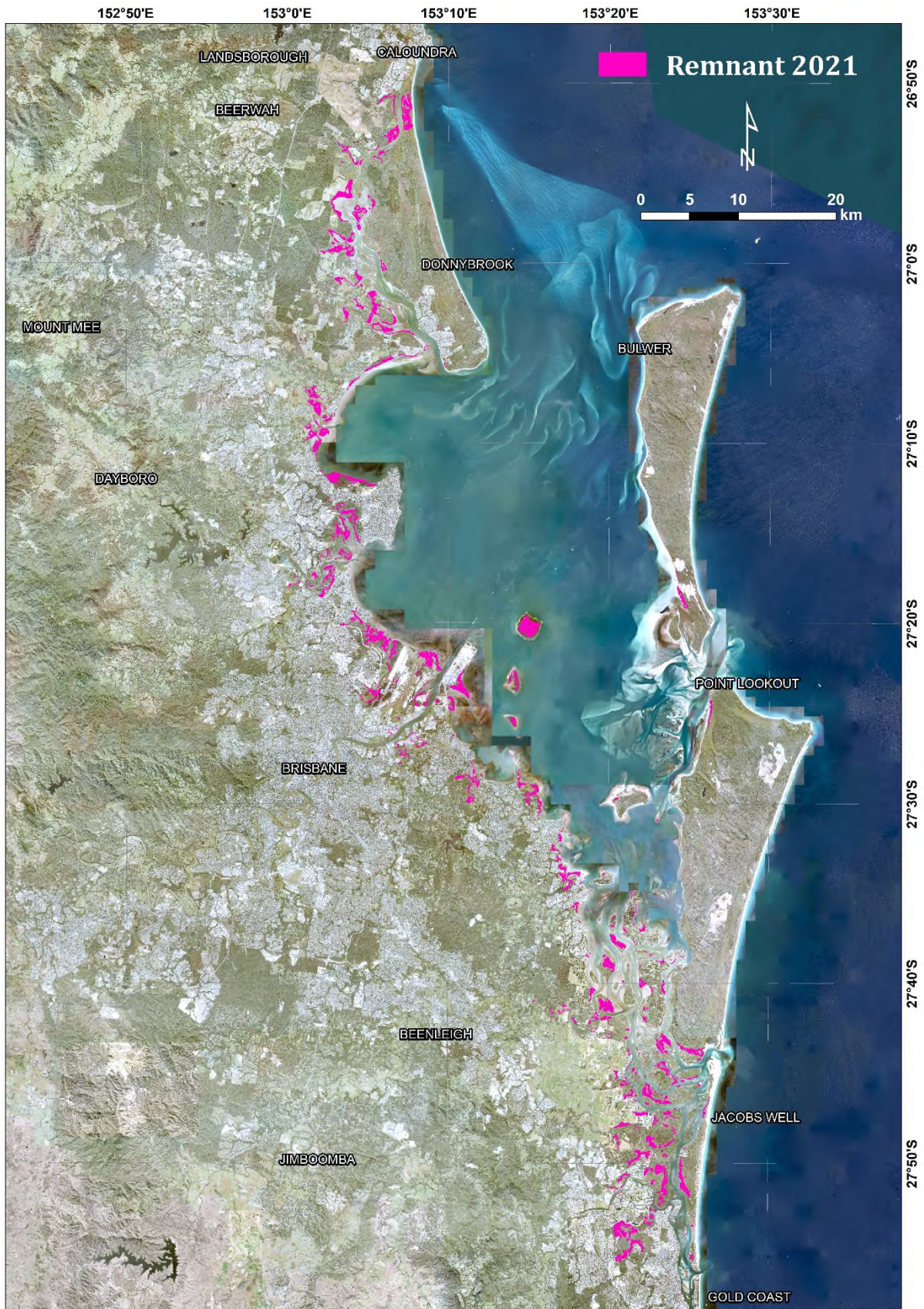


Figure 3. Remnant 2021 extent of *Avicennia marina* subsp. *australasica* closed-scrub, open-scrub (1B(ii)a).

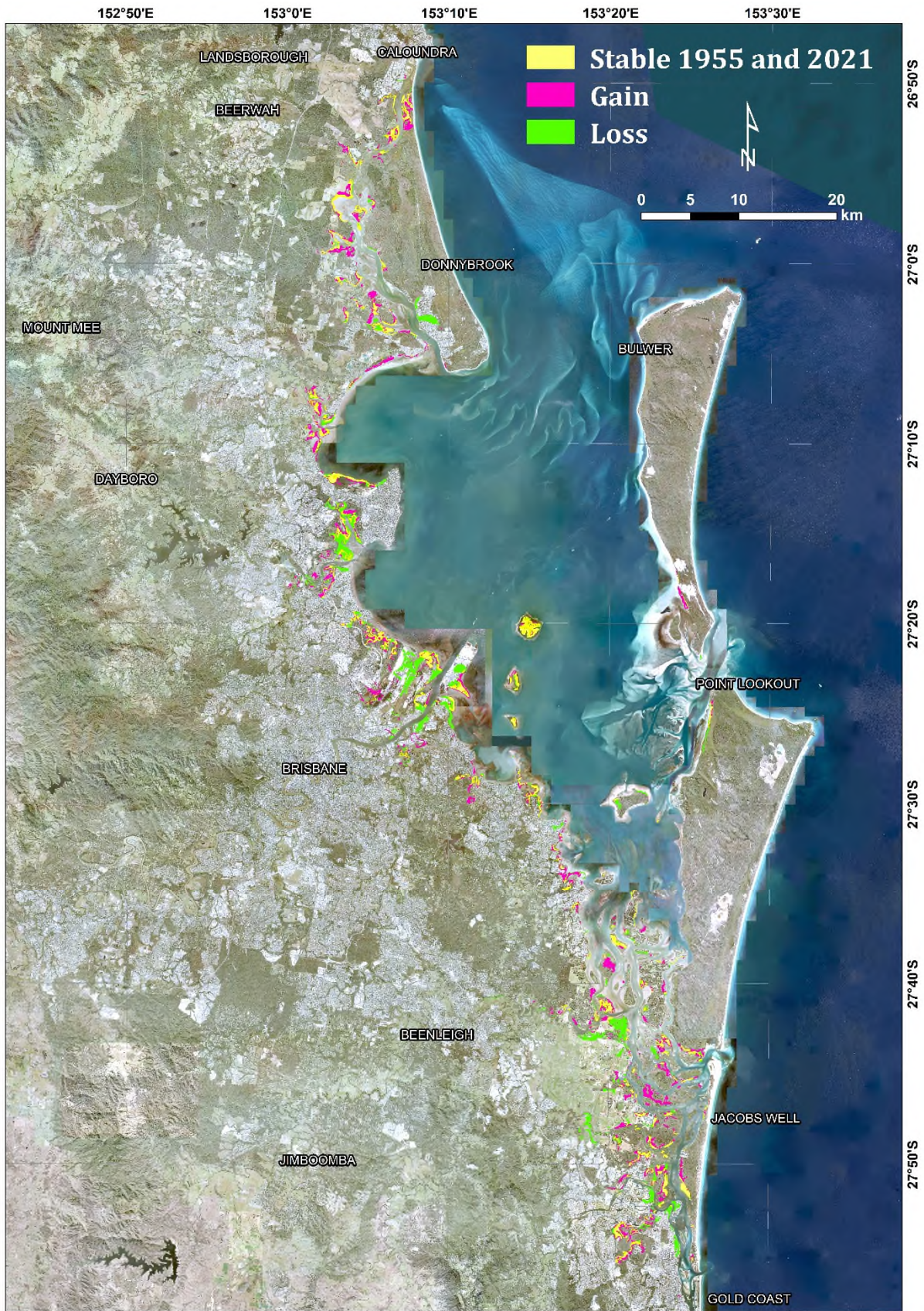


Figure 4. Change in extent between 1955 and 2021 of *Avicennia marina* subsp. *australasica* closed-scrub, open-scrub, (1B(ii)a).