

Map Unit: 1B(i) *Avicennia marina* subsp. *australasica* low open-forest



Figure 1. Map Unit: 1B(i) *Avicennia marina* subsp. *australasica* low open-forest

Description: *Avicennia marina* subsp. *australasica* predominates forming a dense canopy that is usually 8-10m tall. *Rhizophora stylosa* occasionally occurs in the canopy. Where a shrub layer exists, it is usually sparse and is predominantly *Avicennia marina* subsp. *australasica*, but also includes other mangrove species. The shrub layer is usually about half the canopy height. The very sparse ground layer consists mainly of mangrove seedlings and occasional patches of marine couch and samphire species.

Structural Formation Range: closed-forest, open-forest (10%), woodland, low closed-forest, low open-forest (71%), low woodland (19%), low open-woodland.

Basal Area Estimate m^2ha^{-1} : mean 18.1; range 5.5-38.0.

Avicennia marina subsp. *australasica* ($17.9 m^2ha^{-1}$), *Rhizophora stylosa* ($0.2 m^2ha^{-1}$).

Canopy Layer

Height: mean 7.8 m; range: 4.0-14.0 m.

Crown Cover: mean 68.2%; range: 5.0-100.0.

Frequent species: *Avicennia marina* subsp. *australasica* (87%), *Rhizophora stylosa* (16%), *Bruguiera gymnorhiza* (9%).

Shrub Layer

Height: mean 2.6 m; range: 0.5-8.0 m.

Crown Cover: mean 24.5%; range: 1.0-95.0.

Frequent species: *Avicennia marina* subsp. *australasica* (54%), *Rhizophora stylosa* (32%), *Aegiceras corniculatum* (16%), *Bruguiera gymnorhiza* (16%), *Ceriops australis* (9%).

Ground Layer

Height: mean 0.3 m; range: 0.1-1.0 m.

Crown Cover: mean 15.4%; range: 1.0-50.0.

Frequent species: *Avicennia marina* subsp. *australasica* (74%), *Sporobolus virginicus* (9%), *Rhizophora stylosa* (6%), *Suaeda arbusculoides* (6%), *Suaeda australis* (6%).

Total species recorded: 15. **Mean species per site:** 3 with a standard deviation of 2.

Ecological Notes:

This map unit is usually found inland of the seaward edge of the mangroves but is also often found towards the centre of the larger tidally inundated islands of Moreton Bay.

Map Unit: 1B(i) statistics and distribution maps

1B(i) *Avicennia marina* subsp. *australasica* low open-forest

Table 1. Area of *Avicennia marina* subsp. *australasica* closed-forest, open-forest, woodland, low open-forest, low woodland, low open-woodland 1B(i)

Vegetation Type, ha	1955	1997	2012	2016	2020	2021
1B(i)	3640	4713	5007	5008	5046	5043

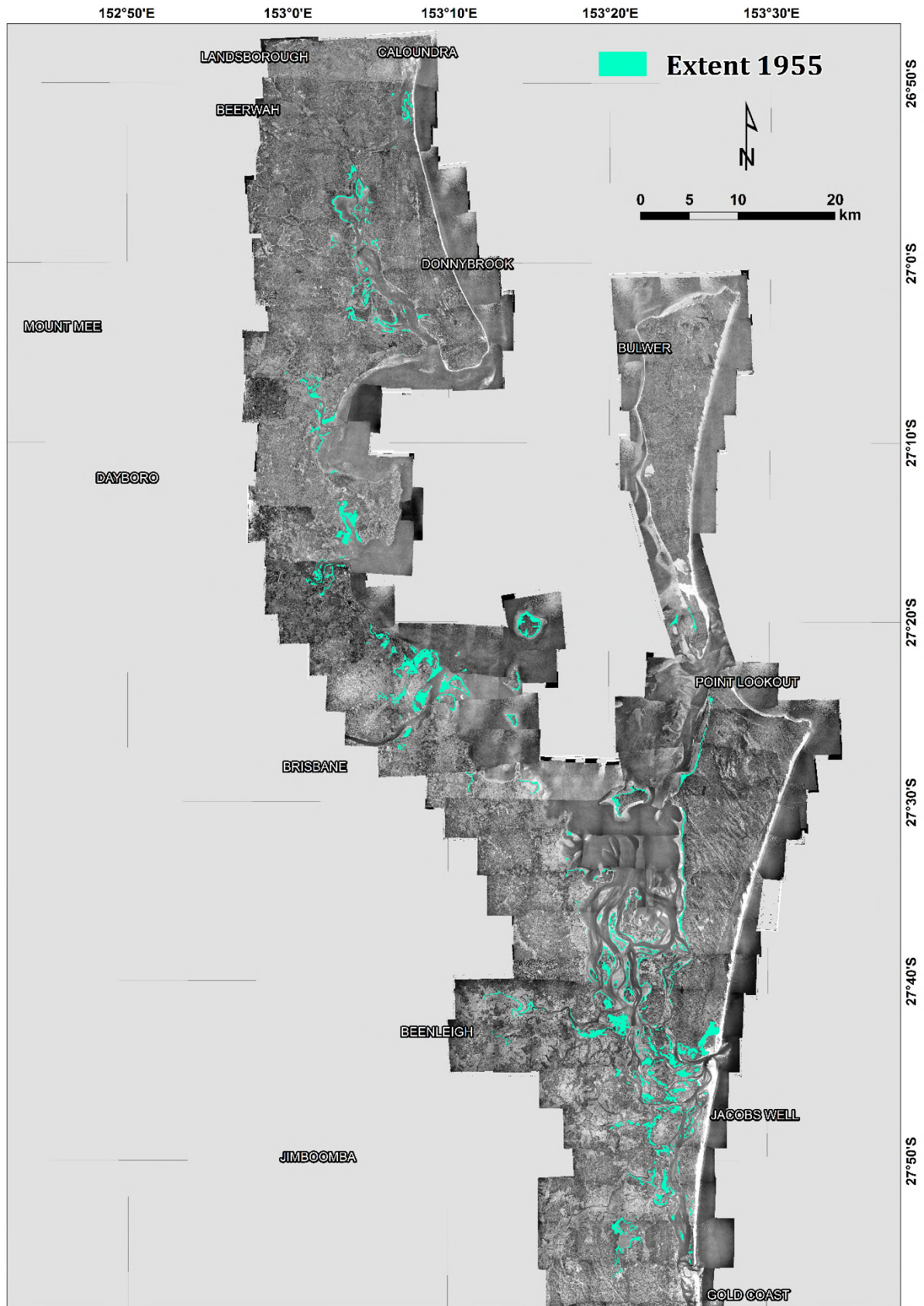


Figure 2. Extent 1955 of *Avicennia marina* subsp. *australasica* closed-forest, open-forest, woodland, low open-forest, low woodland, low open-woodland 1B(i).

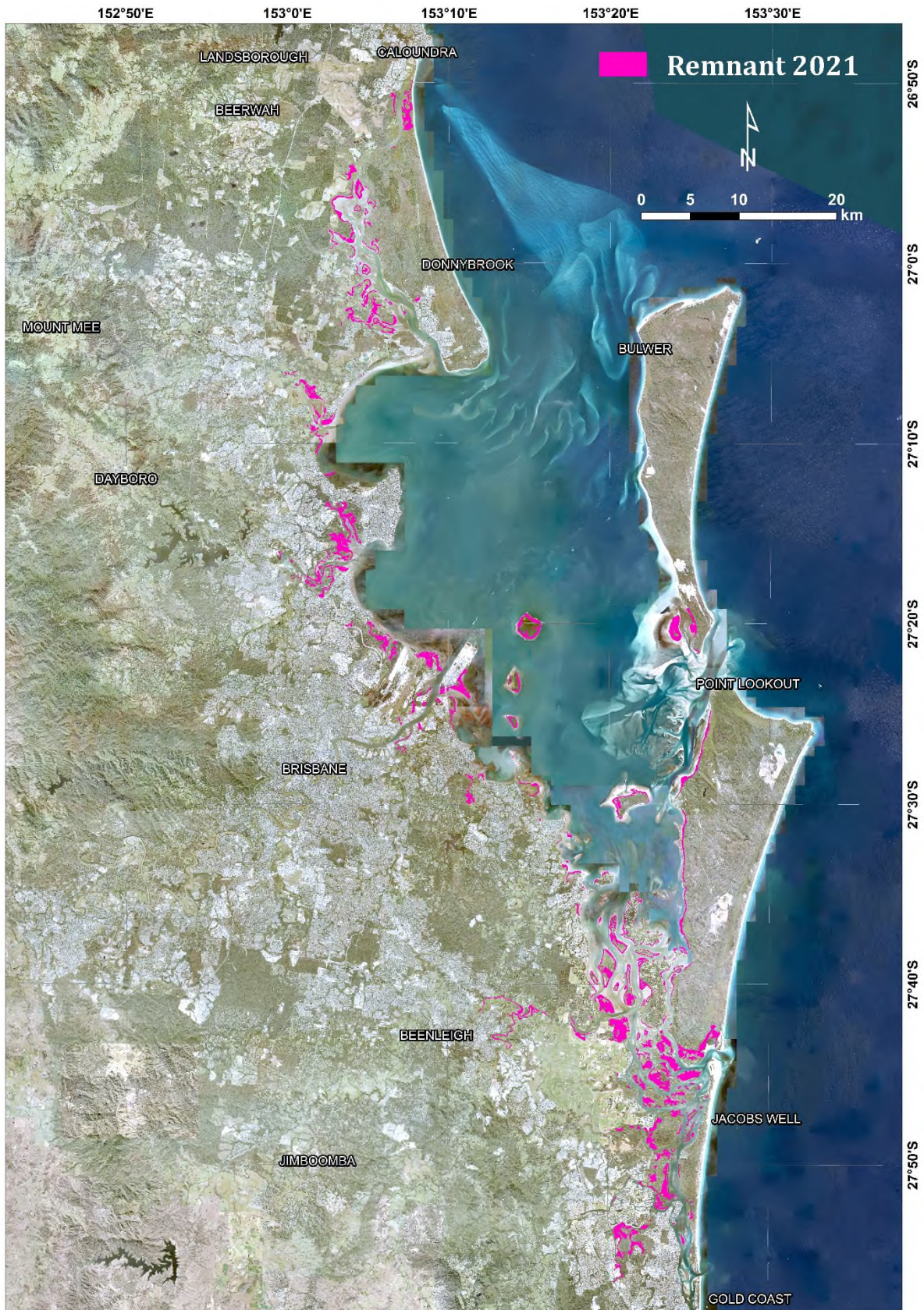


Figure 3. Remnant 2021 extent of *Avicennia marina* subsp. *australasica* closed-forest, open-forest, woodland, low open-forest, low woodland, low open-woodland (1B(i)).

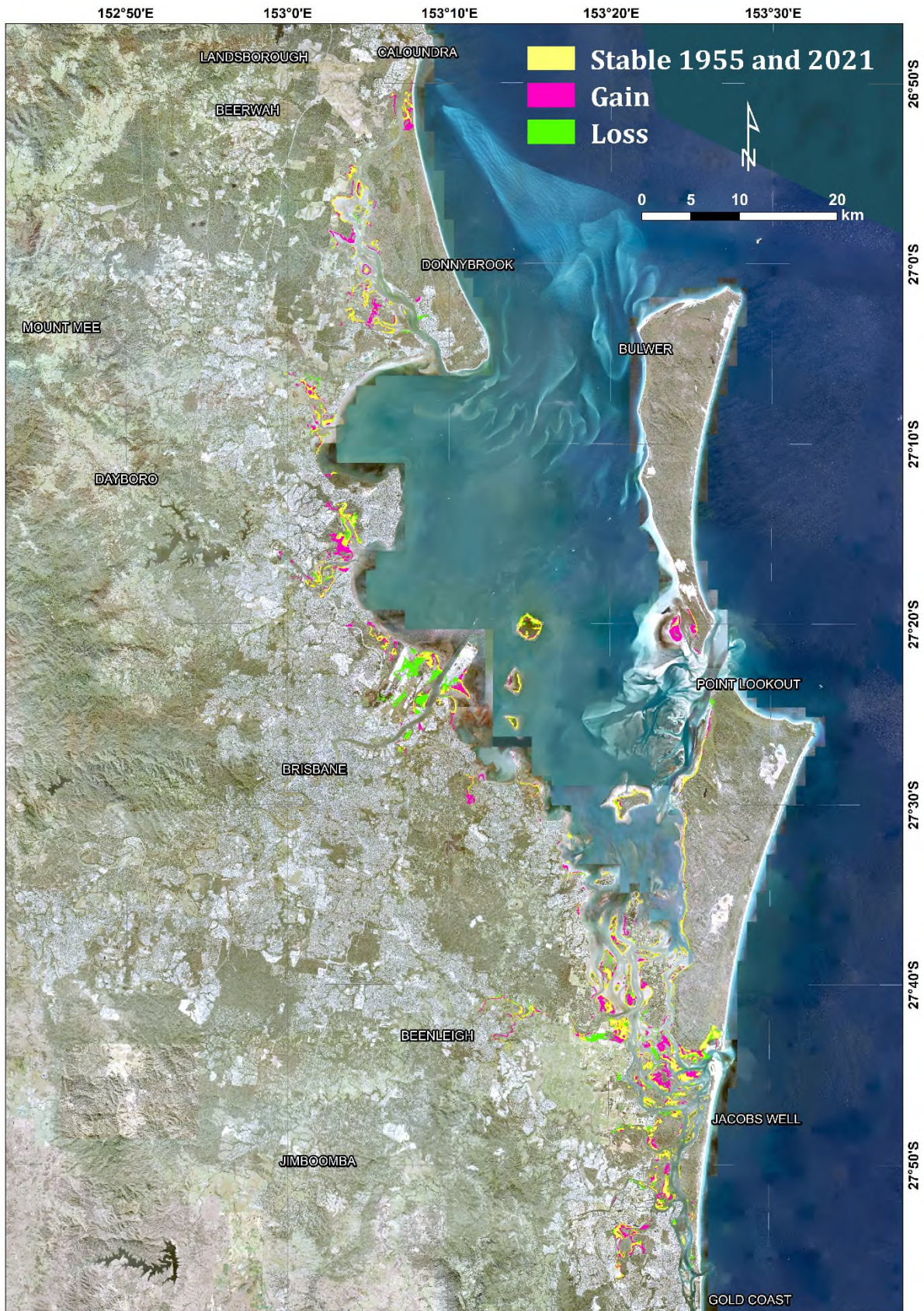


Figure 4. Change in extent between 1955 and 2021 of *Avicennia marina* subsp. *australasica* closed-forest, open-forest, woodland, low open-forest, low woodland, low open-woodland (1B(i)).