

Tinchi Tamba 2 (site ID = Tinchi2) Saltmarsh and Marine Couch

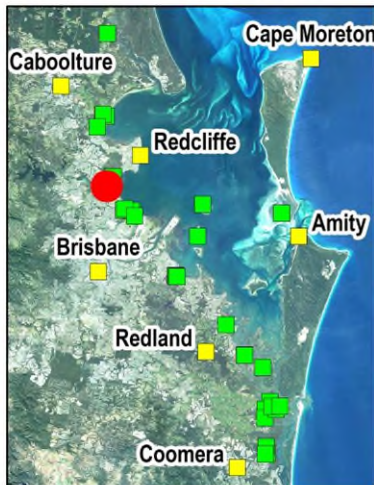
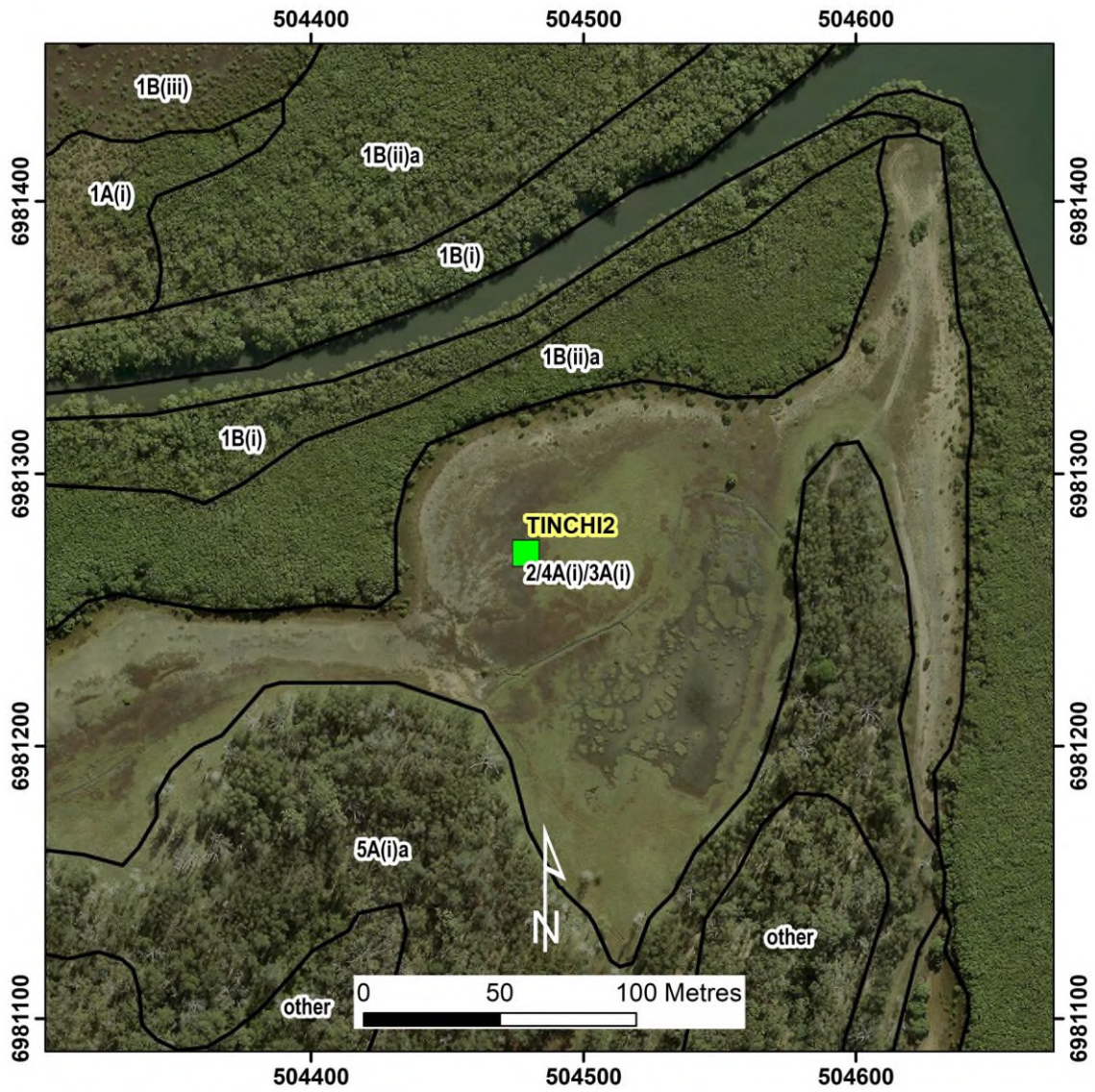


Table 1. Queensland Biodiversity Ecological Information System (QBEIS) temporal assessment for site Tinchi 2.

Date	14.07.2016	12.7.19	05.08.2022
E Spp.			
T1 Spp.			
T1 Med Canopy Height			
T1 Range low			
T1 Range High			
T1 Crown Cover			
T1 Stem Count			
T2 Spp.			
T2 Med Canopy Height			
T2 Range low			
T2 Range high			
T2 Crown Cover			
T2 stem count			
S1 Spp.			
S1 Med Canopy Height			
S1 Range low			
S1 Range high			
S1 Crown Cover			
S1 stem count			
S2 Spp.			
S2 Med Canopy Height			
S2 Range low			
S2 Range high			
S2 Crown Cover			
S2 stem count			
G Spp.	<i>Sporobolus virginicus</i> <i>Suaeda australis</i> <i>Salicornia quinqueflora</i> <i>Suaeda arbusculoides</i>	<i>Sporobolus virginicus</i> <i>Suaeda australis</i> <i>Salicornia quinqueflora</i> <i>Suaeda arbusculoides</i>	<i>Sporobolus virginicus</i> <i>Salicornia quinqueflora</i> subsp. <i>quinqueflora</i> <i>Suaeda australis</i> <i>Suaeda arbusculoides</i> <i>Fimbristylis dichotoma</i> <i>Avicennia marina</i> subsp. <i>australasica</i>
G Med Canopy Height	0.15	0.15	0.15
G Range low	0.05	0.05	0.05
G Range high	0.3	0.3	0.3
G Cover	59	53	53

Individual Covers	24, 11, 24, +	2, 14, 36, 1	13; 38;10; 1;1;+
-------------------	---------------	--------------	------------------

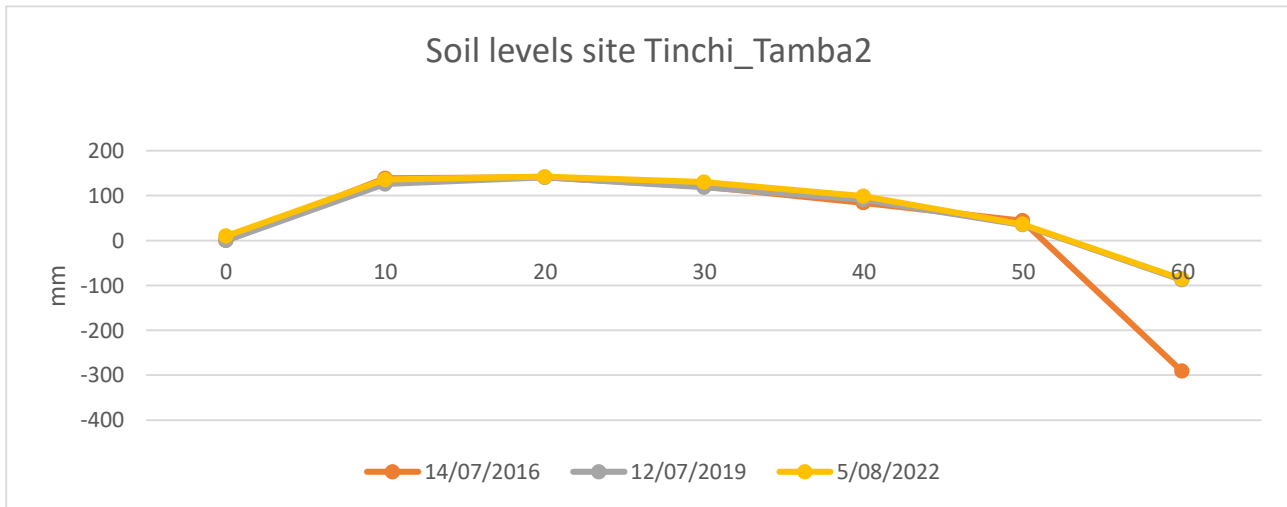


Figure 3. Soil surface elevation measurements (mm) are taken across the QBEIS sites using dumpy level.

Summary

1. Ground layers diverse with *Sporobolus virginicus*, *Suaeda australis*, *Salicornia quinqueflora* and *Suaeda arbusculoides* present over the years with a 6% reduction in cover over the years.
2. Ground layers heights remain stable over the years.
3. Soil max range level across the plot reduced by 190 mm due to accretion at the mangrove end (at 60m).
4. Soil levels over the period have remain unchanged across the site besides an accretion at the mangrove end (at 60m).

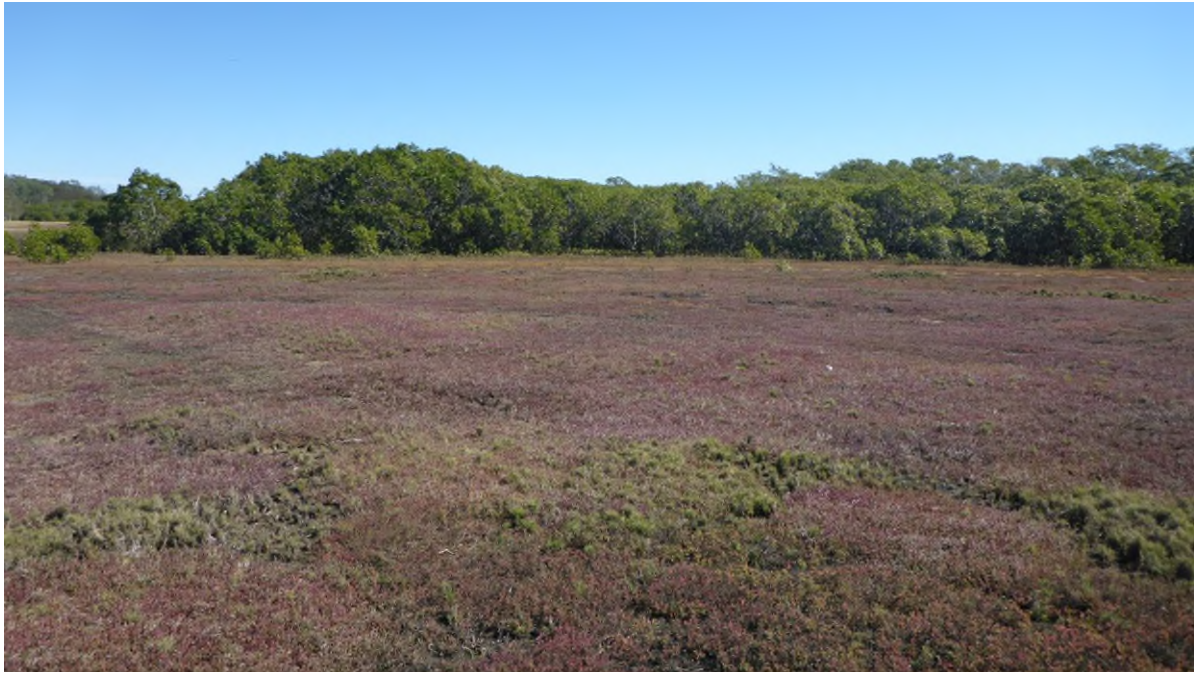


Figure 4. Photograph of Site Tinchi Tamba 2 Saltmarsh and Marine Couch, communities 3A(i) and 4A(i).