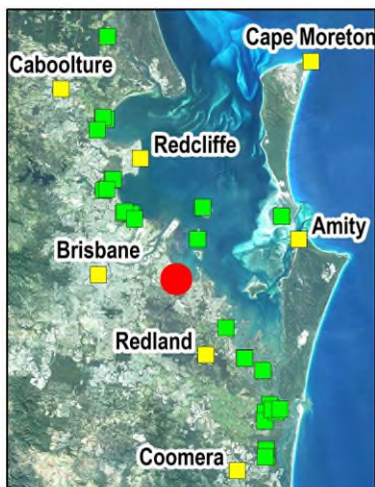
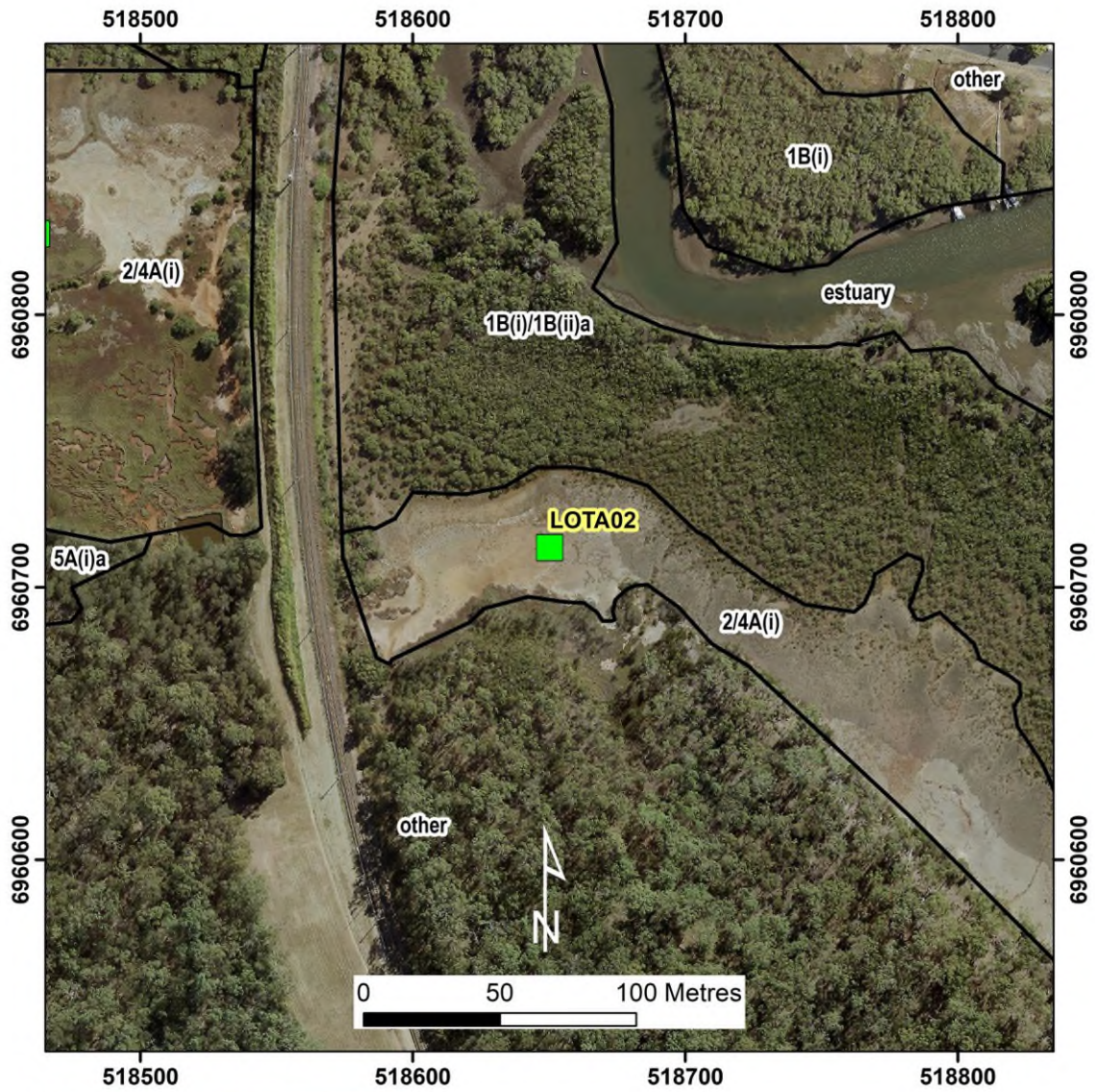


# Lota Creek 2 (site ID = Lota2) Saltmarsh and Marine Couch



**Table 1. Queensland Biodiversity Ecological Information System (QBEIS) temporal assessment for site Lota Creek 2.**

Date	12.08.2016	25.10.2019	19.08.2022
E Spp.			
T1 Spp.	<i>Casuarina glauca</i> (one tree only)	<i>Casuarina glauca</i> (one tree only)	<i>Casuarina glauca</i> (one tree only)
T1 Med Canopy Height	7.7	7.7	7.6
T1 Range low	7.7	7.7	7.6
T1 Range High	7.7	7.7	7.6
T1 Crown Cover	1	1	1
T1 Stem Count			1
T2 Spp.			
T2 Med Canopy Height			
T2 Range low			
T2 Range high			
T2 Crown Cover			
T2 stem count			
S1 Spp.	<i>Avicennia marina</i> subsp. <i>australasica</i>	<i>Avicennia marina</i> subsp. <i>Australasica</i> , <i>Aegiceras corniculatum</i>	<i>Avicennia marina</i> subsp. <i>Australasica</i>
S1 Med Canopy Height	0.4	0.4	1
S1 Range low	0.3	0.3	0.4
S1 Range high	1.4	1.4	2
S1 Crown Cover	1	2	2
S1 stem count			
S2 Spp.			
S2 Med Canopy Height			
S2 Range low			
S2 Range high			
S2 Crown Cover			
S2 stem count			
G Spp.	<i>Sporobolus virginicus</i> <i>Suaeda australis</i> <i>Salicornia quinqueflora</i> subsp. <i>quinqueflora</i> <i>Avicennia marina</i> subsp. <i>australasica</i>	<i>Sporobolus virginicus</i> <i>Suaeda australis</i> <i>Sesuvium portulacastrum</i> <i>Salicornia quinqueflora</i> subsp. <i>quinqueflora</i> <i>Avicennia marina</i> subsp. <i>Australasica</i>	<i>Sporobolus virginicus</i> <i>Sesuvium portulacastrum</i> <i>Suaeda arbusculoides</i> <i>Fimbristylis polytrichoides</i> <i>Salicornia quinqueflora</i> subsp. <i>quinqueflora</i>

		<i>Suaeda arbusculoides</i>	<i>Avicennia marina</i> subsp. <i>australasica</i> <i>Juncus kraussii</i> <i>Suaeda australis</i>
G Med Canopy Height	0.06	0.06	0.06
G Range low	0.05	0.05	0.05
G Range high	0.3	0.3	0.3
G Cover	11	11	28
Individual Covers	6, 1, 4, +	4, 3, 1, 3, +, +	9; +; +; +; 11; +; +; 7

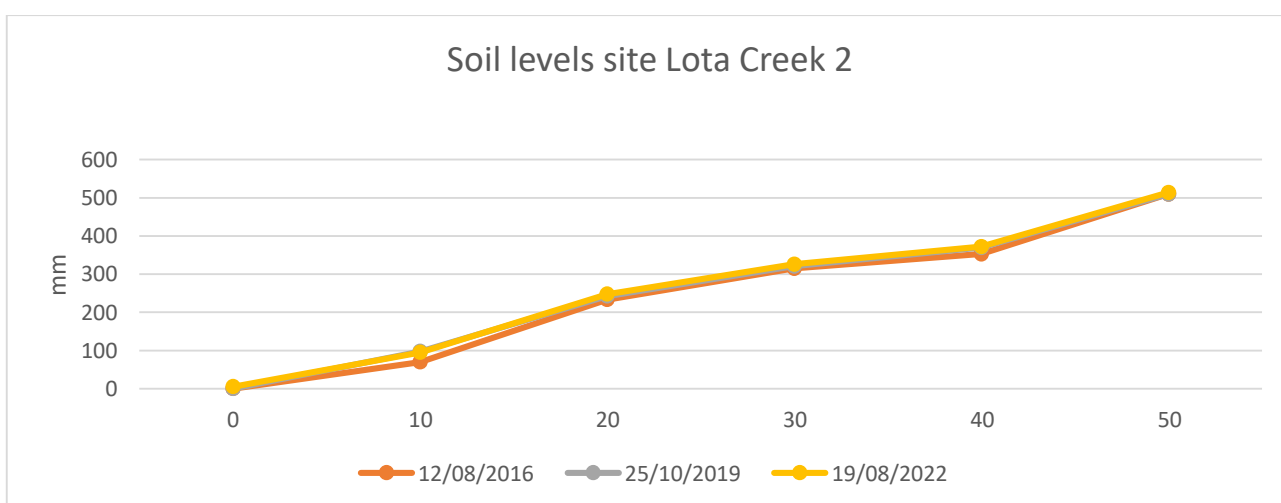


Figure 3. Soil surface elevation measurements (mm) are taken across the QBEIS sites using dumpy level.

### Summary

1. T1 including *Casuarina glauca* (one tree only) on the edge of the saltmarsh.
2. S1 including *Avicennia marina* subsp. *australasica* invading salt marsh in 2019 as is *Aegiceras corniculatum*.
3. S1 height increased by 0.6m over the years and cover doubles.
4. Ground layer is diverse with *Sporobolus virginicus*, *Suaeda australis*, *Salicornia quinqueflora* and *Avicennia marina* subsp. *australasica* in 2016 with *Sesuvium portulacastrum* and *Suaeda arbusculoides* also present in 2019 and *Juncus kraussii* present in 2022.
5. Ground layers height is stable over the years with ground cover increasing 2.5-fold from 11% in 2016 to 28% in 2022.
6. Soil max range level across the plot reduced by 4 mm to 34mm with erosion of up to 10mm.
7. Soil levels only changed slightly unchanged across the site.



Figure 4. Photograph of Site Lota 2 Saltmarsh and Marine Couch, communities 3A(i) and 4A(i).