

Lota Creek 1 (site ID = Lota1) Saltmarsh and Marine Couch

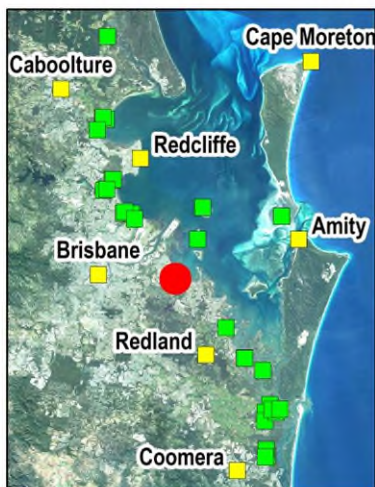
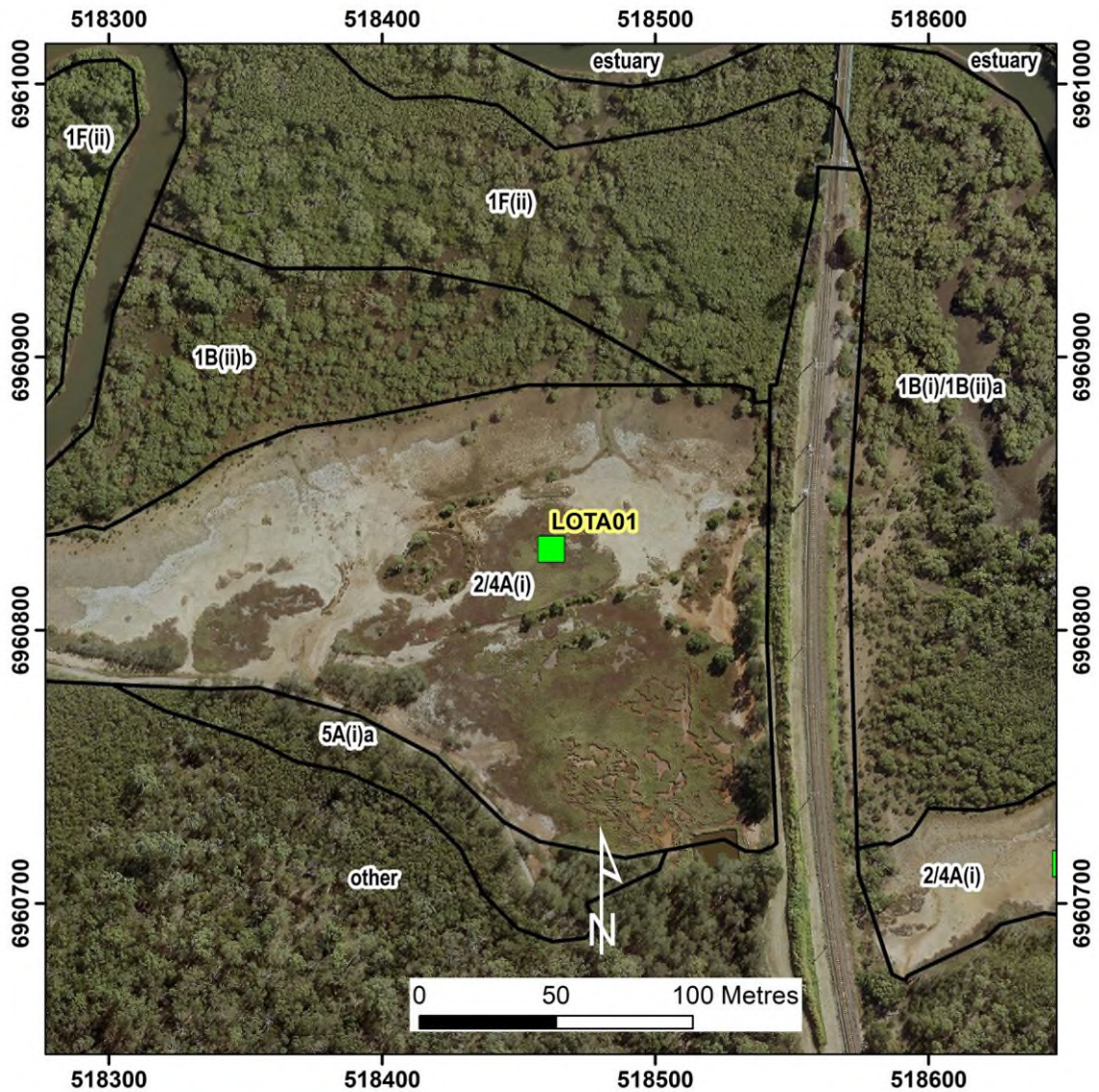


Table 1. Queensland Biodiversity Ecological Information System (QBEIS) temporal assessment for site Lota Creek 1.

Date	12.08.2016	25.10.2019	19.08.2022
E Spp.			
T1 Spp.			
T1 Med Canopy Height			
T1 Range low			
T1 Range High			
T1 Crown Cover			
T1 Stem Count			
T2 Spp.			
T2 Med Canopy Height			
T2 Range low			
T2 Range high			
T2 Crown Cover			
T2 stem count			
S1 Spp.	<i>Avicennia marina</i> subsp. <i>australasica</i>	<i>Avicennia marina</i> subsp. <i>australasica</i>	<i>Avicennia marina</i> subsp. <i>australasica</i>
S1 Med Canopy Height	1.9	2	2.4
S1 Range low	1.9	2	2.4
S1 Range high	1.9	2	2.3
S1 Crown Cover	+	+	1
S1 stem count			
S2 Spp.			<i>Avicennia marina</i> subsp. <i>australasica</i>
S2 Med Canopy Height			1
S2 Range low			1
S2 Range high			1
S2 Crown Cover			+
S2 stem count			
G Spp.	<i>Sporobolus virginicus</i> <i>Sesuvium portulacastrum</i> <i>Suaeda australis</i> <i>Salicornia quinqueflora</i> subsp. <i>quinqueflora</i>	<i>Sporobolus virginicus</i> <i>Sesuvium portulacastrum</i> <i>Suaeda australis</i> <i>Salicornia quinqueflora</i> subsp. <i>quinqueflora</i> <i>Avicennia marina</i> subsp. <i>australasica</i>	<i>Sporobolus virginicus</i> <i>Sesuvium portulacastrum</i> <i>Juncus kraussii</i> <i>Fimbristylis polytrichoides</i> <i>Suaeda australis</i> <i>Salicornia quinqueflora</i> subsp. <i>quinqueflora</i>

			<i>Avicennia marina</i> subsp. <i>australasica</i>
G Med Canopy Height	0.15	0.15	0.15
G Range low	0.05	0.05	0.05
G Range high	0.3	0.5	0.5
G Cover	65	66	66
Individual Covers	40, 10, 5, 10	19, 6, 7, 34, +	18; 4, +; +; 6; 43; +

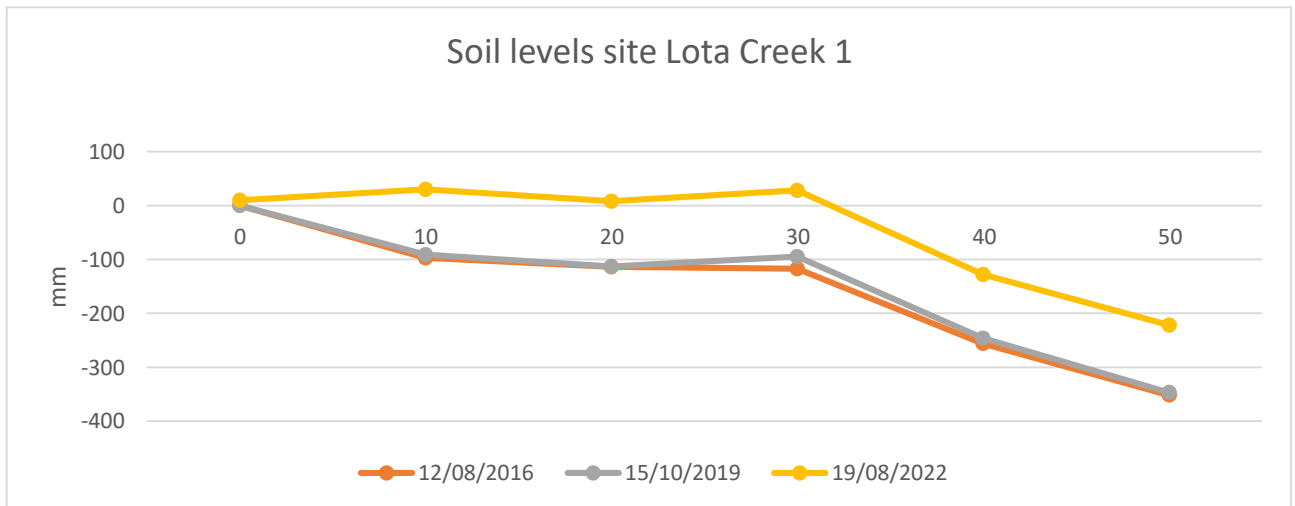


Figure 3. Soil surface elevation measurements (mm) are taken across the QBEIS sites using dumpy level.

Summary

1. S1 with *Avicennia marina* subsp. *australasica*.
2. S1 shrub height increases from 2016 to 2022 by 0.5m.
3. S2 with *Avicennia marina* subsp. *australasica* of shrub height of 1m can be separated in 2022.
5. Ground layer is diverse and changes in proportions over the years with *Sporobolus virginicus*, *Sesuvium portulacastrum*, *Suaeda australis* and *Salicornia quinqueflora* in 2016; in 2019 the addition of *Avicennia marina* subsp. *australasica*. and in 2022 the occurrence of sedges including *Juncus kraussii* and *Fimbristylis polytrichoides* reflecting wetter years.
6. Ground layers height remains stable over the years.
7. Soil max range level reduced by 4 mm to 34mm with erosion of up to 10mm.
8. Soil levels over the period have accreted.

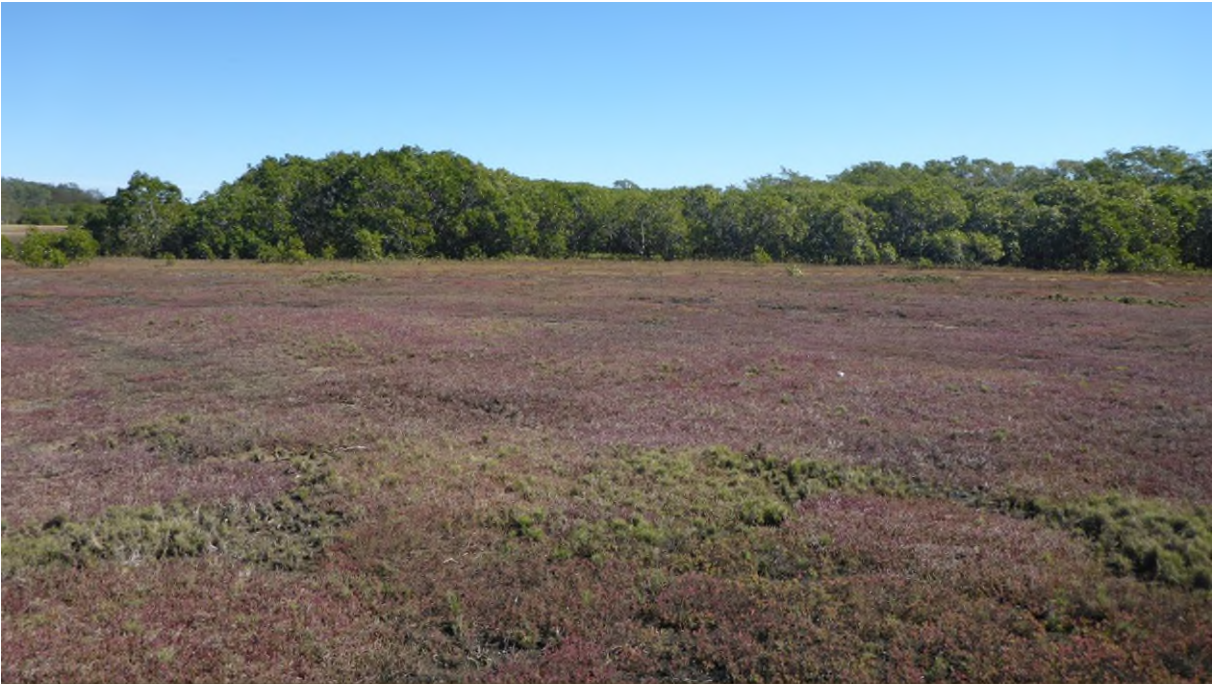


Figure 4. Photograph of Site Lota 1 Saltmarsh and Marine Couch, communities 3A(i) and 4A(i).