

Boondall 2 (site ID = Boondall2) Saltmarsh and Marine Couch

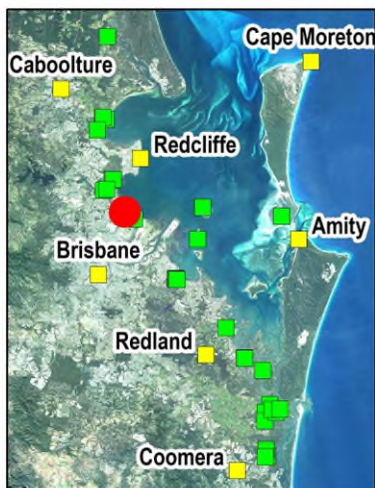
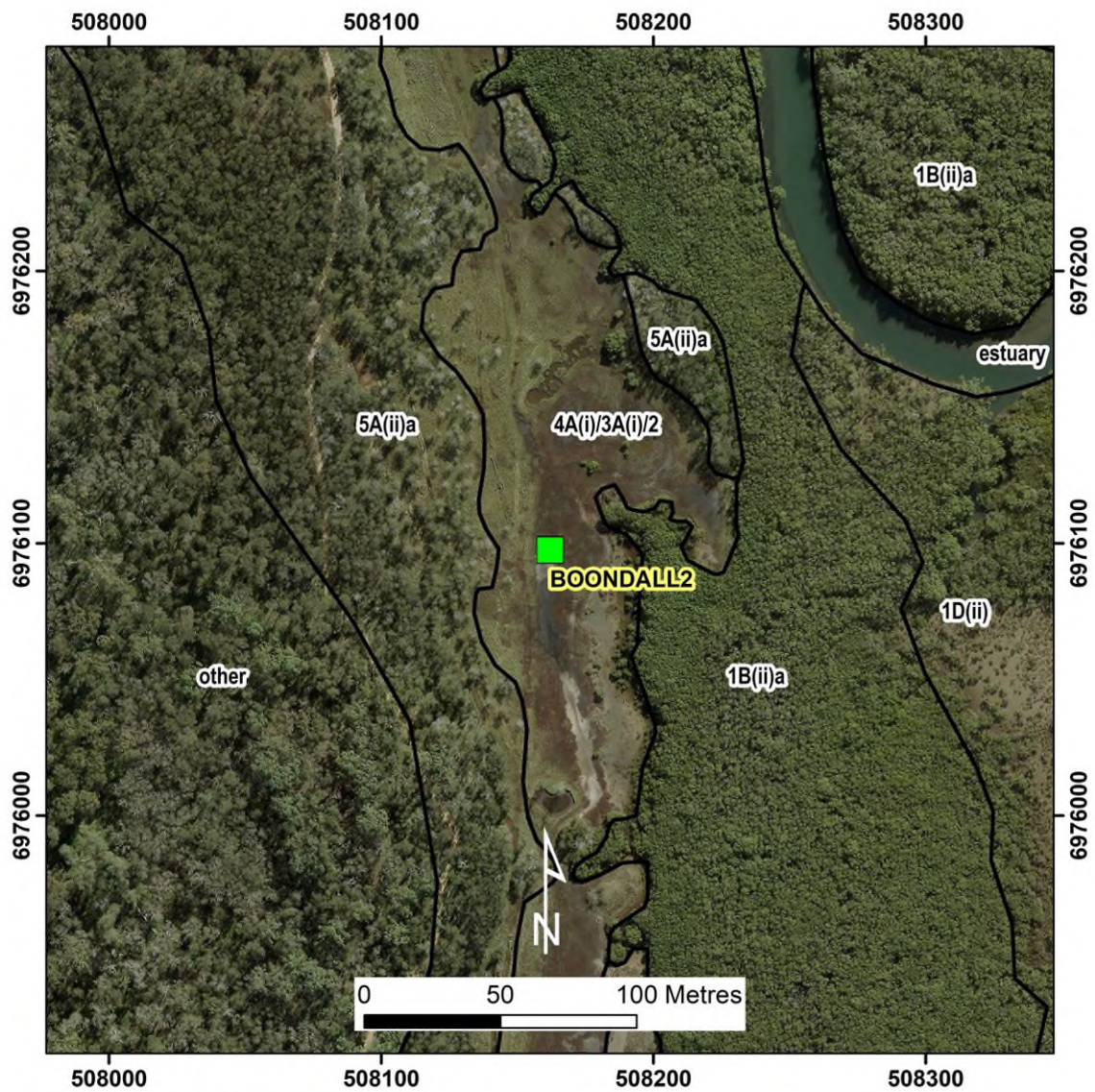


Table 1. Queensland Biodiversity Ecological Information System (QBEIS) temporal assessment for site Boondall 2.

Date	15.07.2016	20.09.2019	06.09.2022
E Spp.			
T1 Spp.			
T1 Med Canopy Height			
T1 Range low			
T1 Range High			
T1 Crown Cover			
T1 Stem Count			
T2 Spp.			
T2 Med Canopy Height			
T2 Range low			
T2 Range high			
T2 Crown Cover			
T2 stem count			
S1 Spp.			
S1 Med Canopy Height			
S1 Range low			
S1 Range high			
S1 Crown Cover			
S1 stem count			
S2 Spp.			
S2 Med Canopy Height			
S2 Range low			
S2 Range high			
S2 Crown Cover			
S2 stem count			
G Spp.	<i>Salicornia quinqueflora</i> <i>Sporobolus virginicus</i> <i>Tecticornia halocnemoides</i>	<i>Salicornia quinqueflora</i> <i>Sporobolus virginicus</i> <i>Tecticornia halocnemoides</i>	<i>Salicornia quinqueflora</i> <i>Sporobolus virginicus</i> <i>Avicennia marina</i> subsp. <i>australasica</i>
G Med Canopy Height	0.1	0.1	0.2
G Range low	0.1	0.1	0.1
G Range high	0.1	0.1	0.3
G Cover	56	46	50
Individual Covers	55, 1, +	45, 1, +	49; 1; +

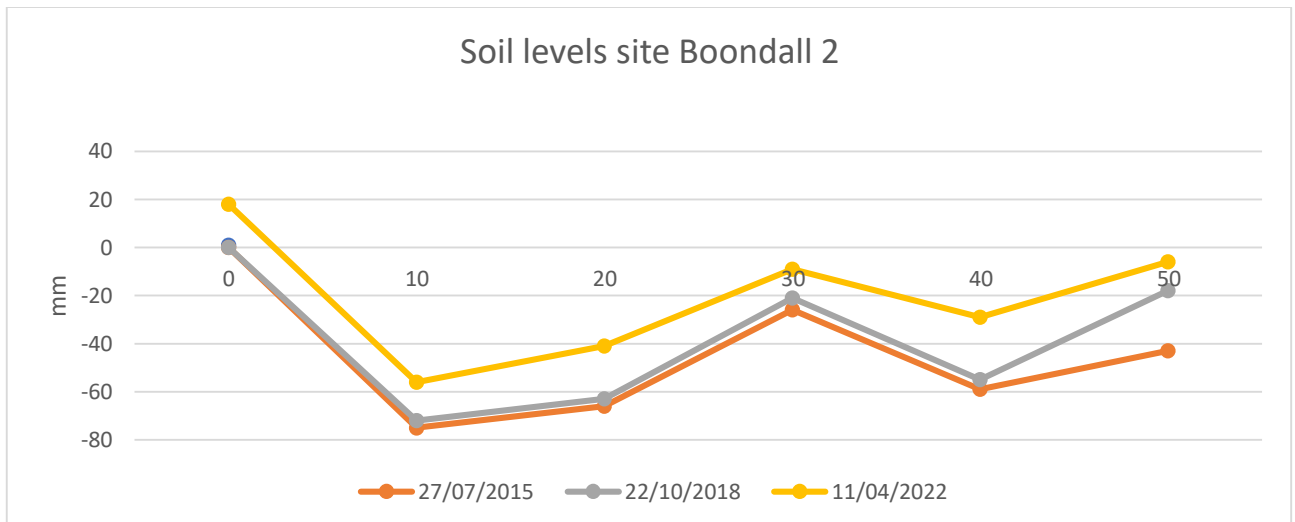


Figure 3. Soil surface elevation measurements (mm) are taken across the QBEIS sites using dumpy level.

Summary

1. Ground layer is diverse with *Salicornia quinqueflora*, *Sporobolus virginicus* and *Tecticornia halocnemoides* in 2016 and 2019 and in 2022 *Salicornia quinqueflora*, *Sporobolus virginicus* and *Avicennia marina* subsp. *australasica*.
- 2 Ground layers heights doubles over the years from 0.1m to 0.2m whereas cover reduces from 56% to 46% and back to 50% over the years.
3. Soil max range level over the plot reduced by 4 mm to 34mm.
4. Soil levels over the period have accreted across the site.

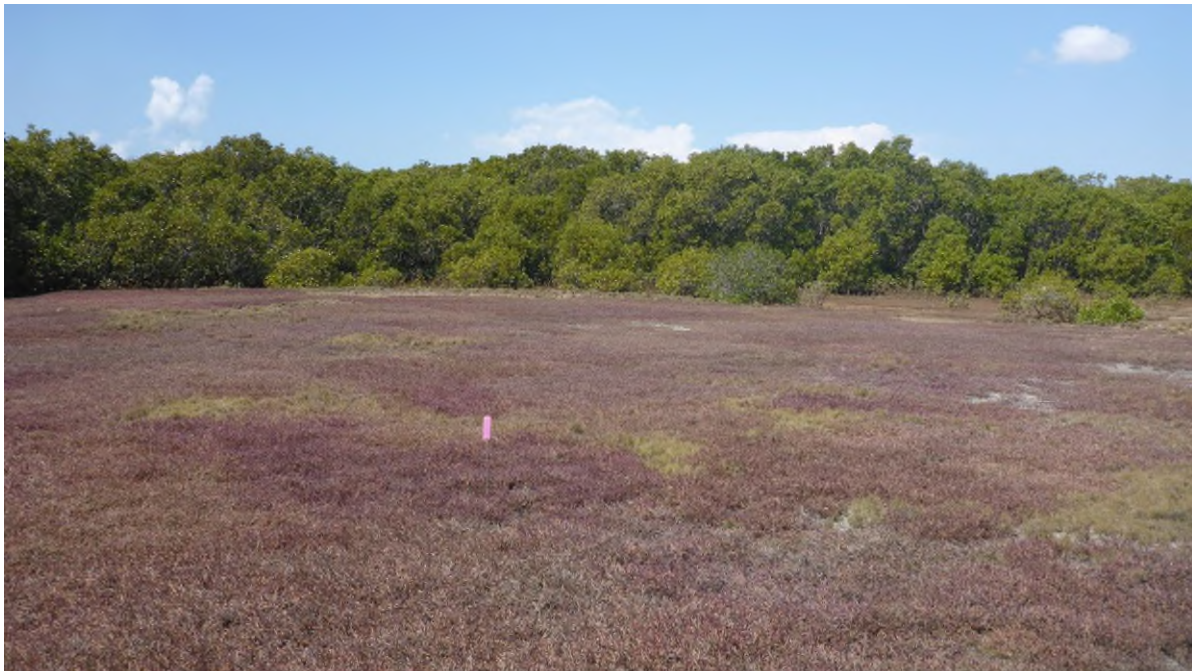


Figure 4. Photograph of Site Boondall 2 Saltmarsh and Marine Couch, communities 3A(i) and 4A(i).