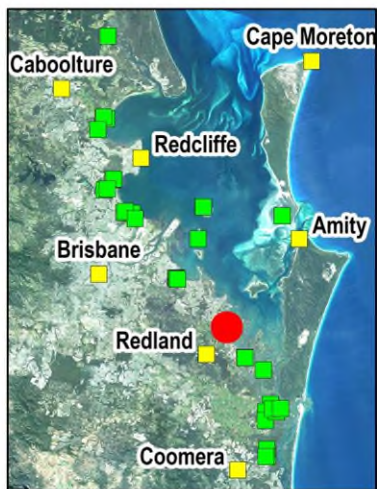
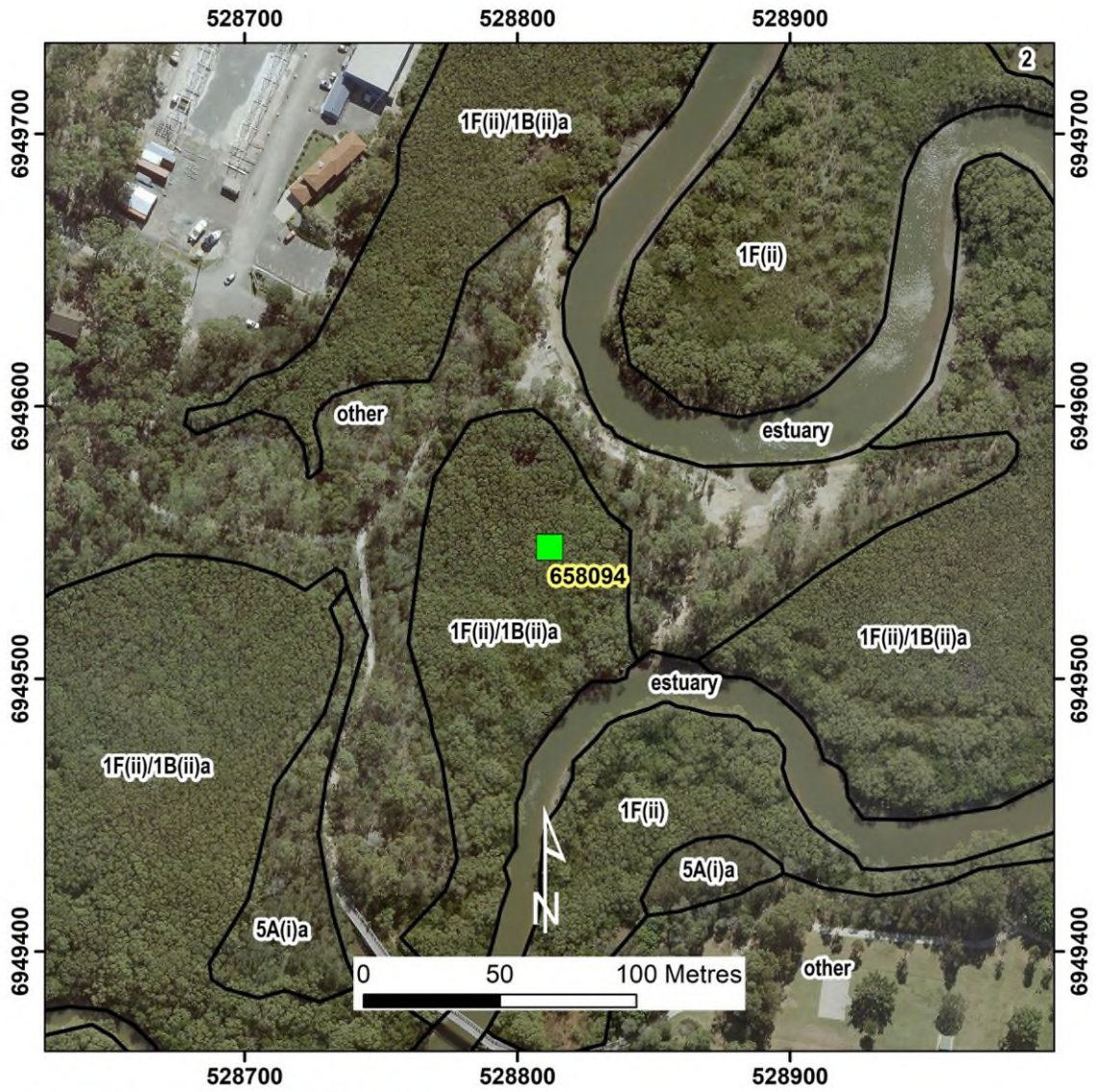


Epraphah Ck (site ID = 658094) Low Closed Forest



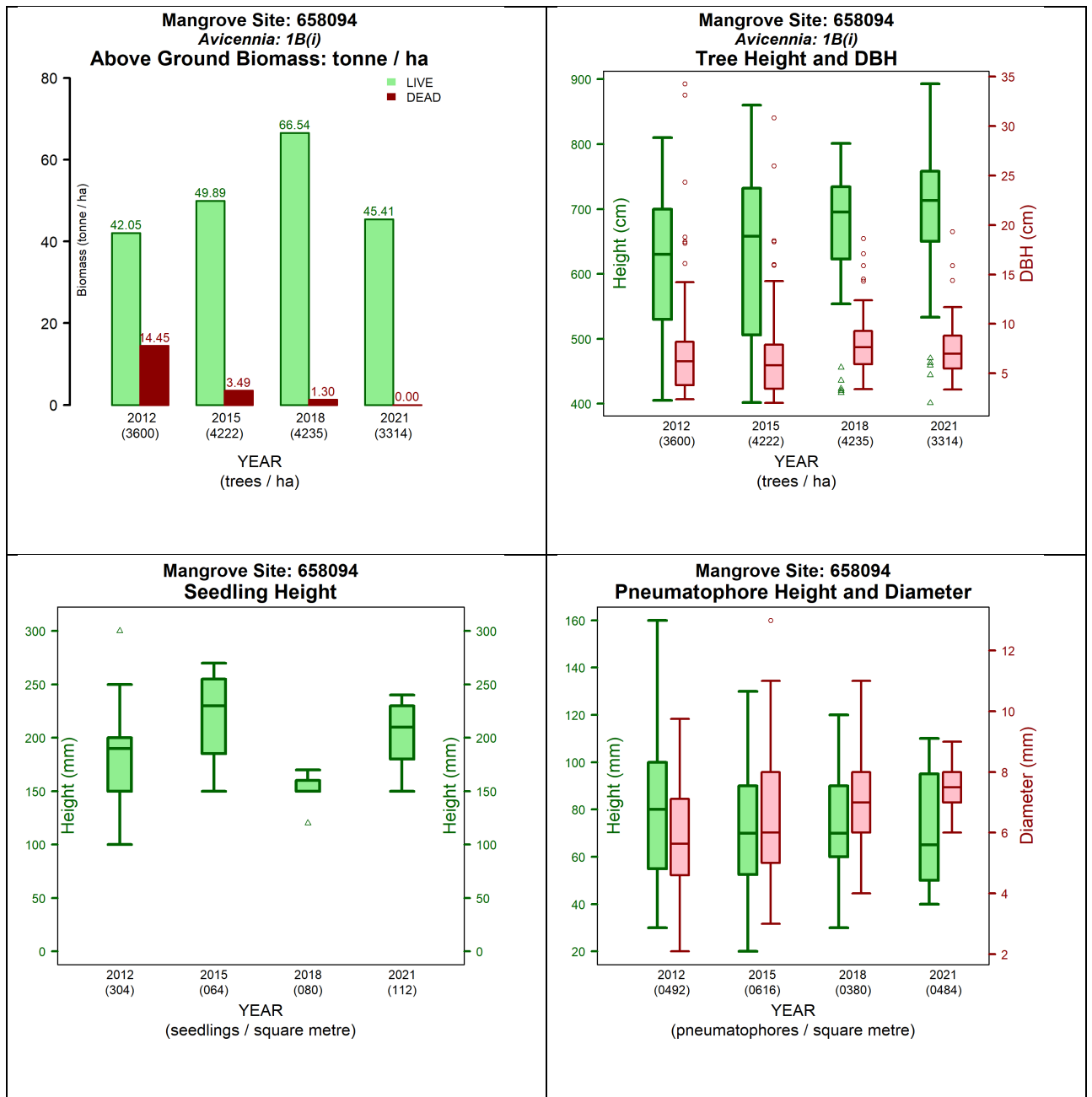


Figure 1. Measurements at site 658094 between 2012 and 2021 (left to right and top to bottom):

- Above ground biomass and density temporal assessment
- Tree height, diameter at breast height (DBH) and stem density temporal assessment
- Pneumatophores height, diameter, and density temporal assessment
- Seedling height and density temporal assessment.

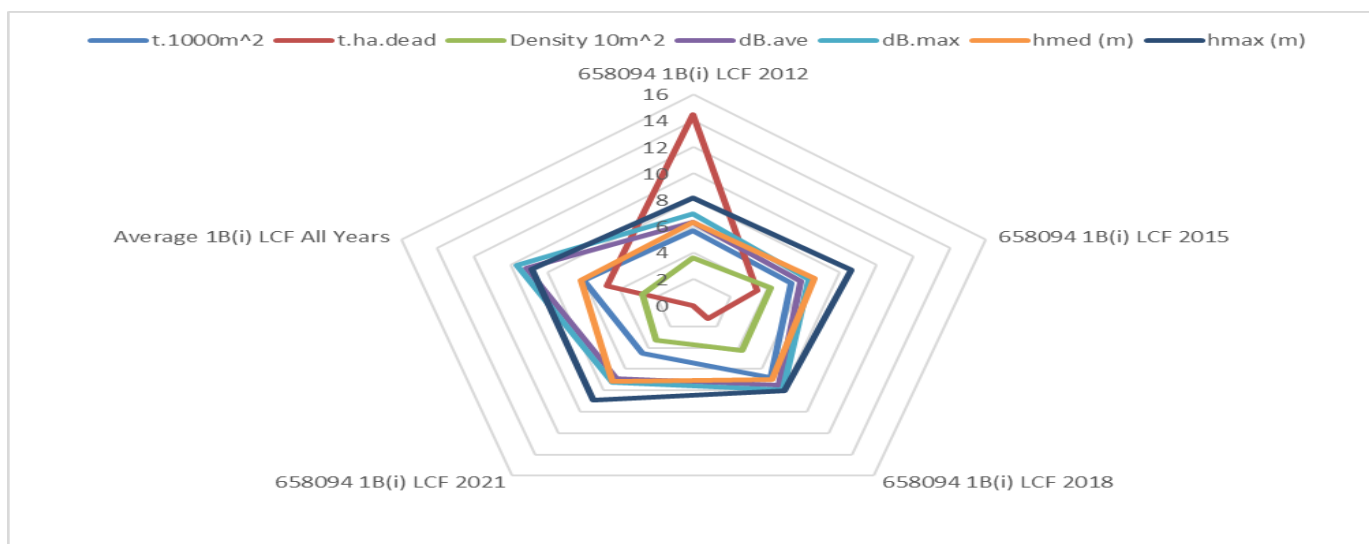


Figure 2. Structural changes over the years for Site 658094 in comparison to average of all sites of vegetation community type 1B(i) by structural formations. The graph indices: t.1000m² is the tonne of live biomass (tonnes) in 1000m square; t.ha.dead is the dead biomass (tonnes) in a hectare; Density 10m² is the number of trees in 10m square; dB.ave is the average diameter at breast height in centimetres; dB.max is the maximum diameter at breast height in centimetres; hmed (m) is the median tree height (meters); hmax (m) is the maximum tree height (meters).

Table 1. Queensland Biodiversity Ecological Information System (QBEIS) temporal assessment for site 658094

Date	03.04.2012	15.04.2015	24.04.2018	04.06.2021
E Spp.				
T1 Spp.	<i>Avicennia marina</i> subsp. <i>australasica</i>	<i>Avicennia marina</i> subsp. <i>australasica</i>	<i>Avicennia marina</i> subsp. <i>australasica</i>	<i>Avicennia marina</i> subsp. <i>australasica</i>
T1 Med Canopy Height	7	7.5	7.5	7.5
T1 Range low	6.5	7	7	7
T1 Range High	7.5	8	8	8
T1 Crown Cover	96	93	91	85
T1 Stem Count	48	59	68	66
T2 Spp.	<i>Avicennia marina</i> subsp. <i>australasica</i>	<i>Avicennia marina</i> subsp. <i>australasica</i>	<i>Avicennia marina</i> subsp. <i>australasica</i>	<i>Avicennia marina</i> subsp. <i>australasica</i>
T2 Med Canopy Height	5.5	5.5	5.5	5.5
T2 Range low	5	5	5	5
T2 Range high	6	6	6	6
T2 Crown Cover	10	5	5	5
T2 stem count	22	20	24	26
S1 Spp.	<i>Avicennia marina</i> subsp. <i>australasica</i> ; <i>Ceriops australis</i>	<i>Avicennia marina</i> subsp. <i>australasica</i> ; <i>Ceriops australis</i> ; <i>Aegiceras corniculatum</i>	<i>Avicennia marina</i> subsp. <i>australasica</i> ; <i>Ceriops australis</i> ; <i>Aegiceras corniculatum</i>	<i>Avicennia marina</i> subsp. <i>australasica</i> ; <i>Ceriops australis</i> ; <i>Aegiceras corniculatum</i>
S1 Med Canopy Height	2.5	3.8	4	4
S1 Range low	2	2.5	2.5	2.5
S1 Range high	4	4	6	5
S1 Crown Cover	5	8	10	10
S1 stem count	31, 9, 1	46, 5, 6	38, 20, 8	34, 18, 4

S2 Spp.	<i>Avicennia marina</i> subsp. <i>australasica</i> ; <i>Aegiceras corniculatum</i>	<i>Avicennia marina</i> subsp. <i>australasica</i> ; <i>Aegiceras corniculatum</i>	<i>Avicennia marina</i> subsp. <i>australasica</i> ; <i>Aegiceras corniculatum</i>	<i>Avicennia marina</i> subsp. <i>australasica</i> ; <i>Aegiceras corniculatum</i>
S2 Med Canopy Height	1.5	1.8	1.8	1.8
S2 Range low	1.5	1.5	1.5	1.5
S2 Range high	2	2	2	2
S2 Crown Cover	45	45	45	35
S2 stem count				
G Spp.	<i>Avicennia marina</i> subsp. <i>australasica</i>	<i>Avicennia marina</i> subsp. <i>australasica</i>	<i>Avicennia marina</i> subsp. <i>australasica</i> ; <i>Aegiceras corniculatum</i> ; <i>Ceriops australis</i>	<i>Avicennia marina</i> subsp. <i>australasica</i> ; <i>Aegiceras corniculatum</i> ; <i>Ceriops australis</i>
G Med Canopy Height	0.2	0.2	0.2	0.2
G Range low	0.1	0.1	0.1	0.1
G Range high	0.3	0.3	0.4	0.5
G Cover	30	5	5	10
Individual Covers	30	5	5; +; +	10; +; +

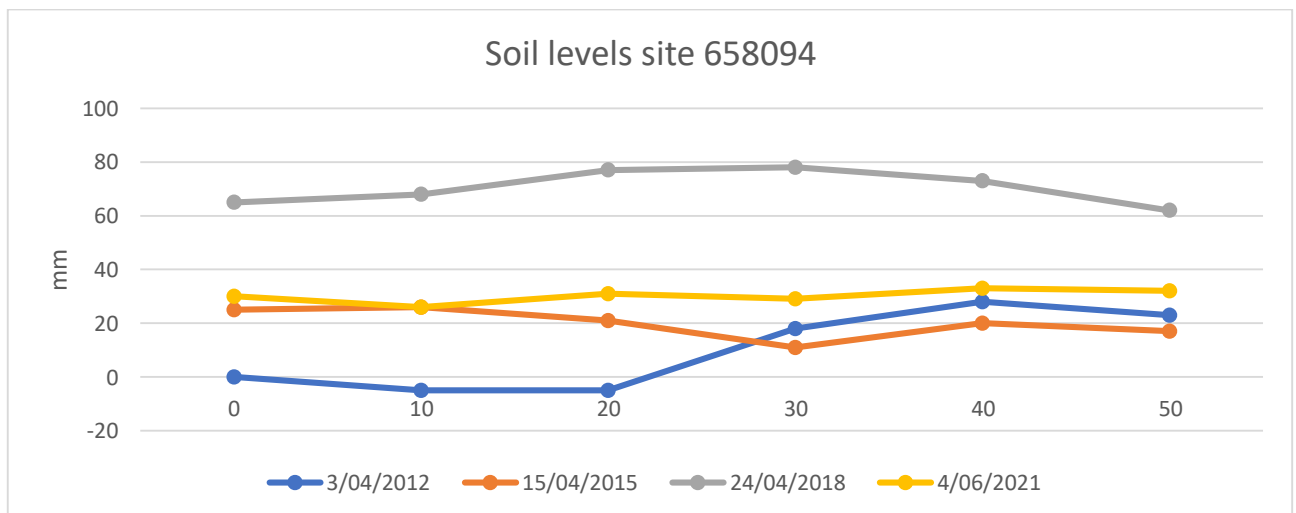


Figure 3. Soil surface elevation measurements (mm) are taken across the QBEIS sites using dumpy level.

Summary

1. Stable species composition across all the years and only increase of *Aegiceras corniculatum* in S1 and G layers
2. Increase in T1 heights (0.5 m) and S1 heights (1.5 m) and a slight increase in densities.
3. Increase in mean tree heights, DBH and density resulting in a 17% increase in site above ground biomass.
4. Large reduction (23.7%) in the proportion of dead to live biomass within the site.
5. Pneumatophores mean height has reduced overall, potentially reflecting lower inundation levels.
7. Reduction in seedling density and height over the years.
8. In the majority of sites the soil levels have accreted over the period.



Figure 4. Photograph of Site 659089 *Avicennia marina* subsp. *australasica* community type 1B(i) Low Closed Forest.