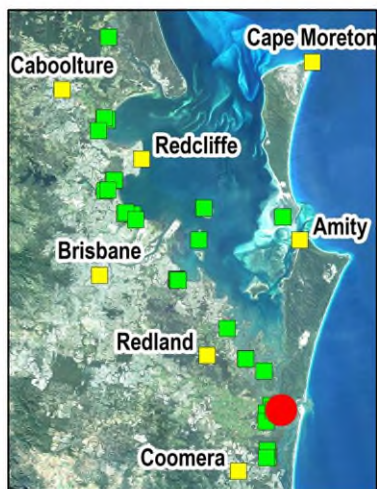
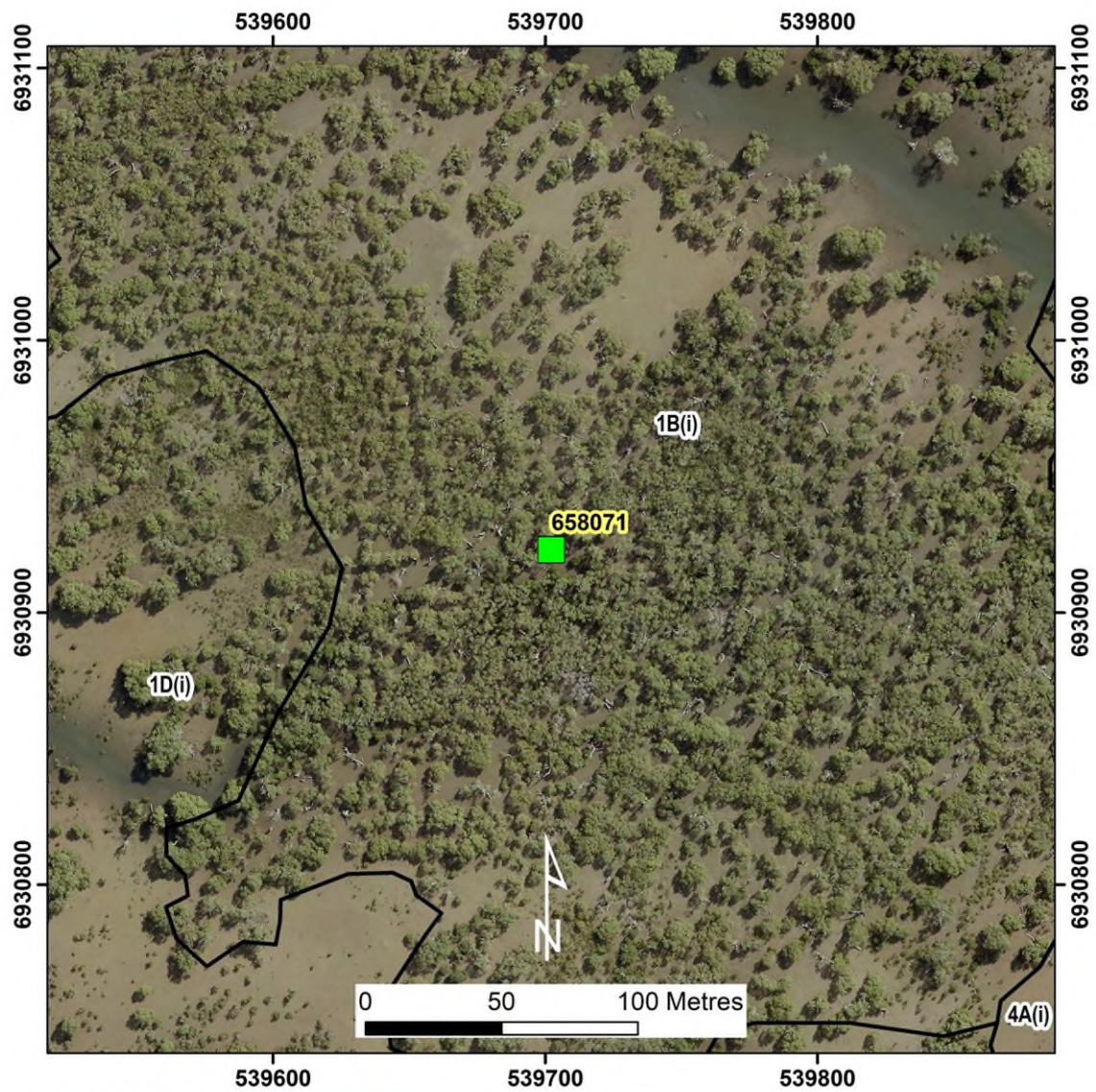


Short Island (site ID = 658071) Low Woodland



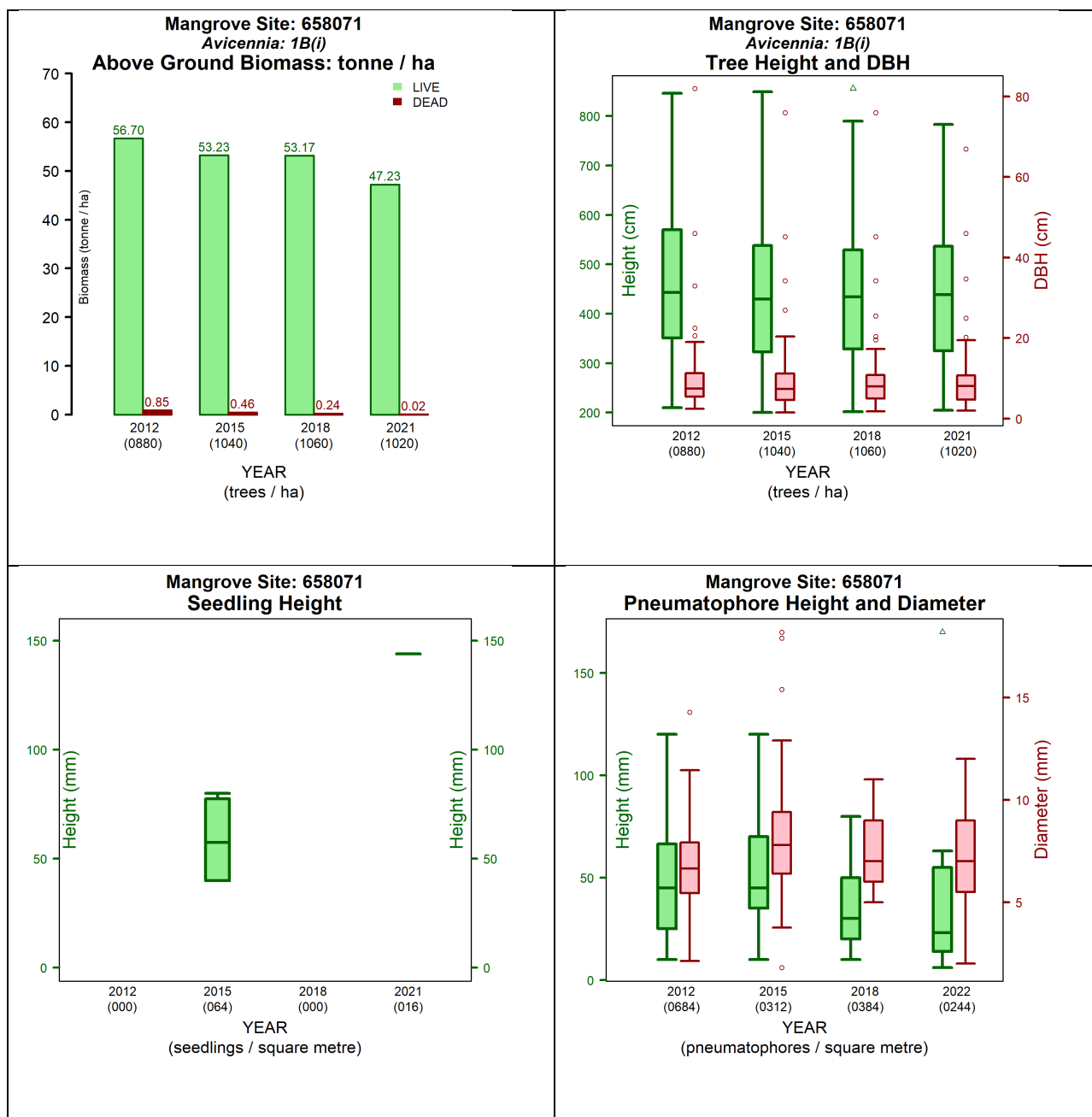


Figure 1. Measurements at site 658071 between 2012 and 2021 (left to right and top to bottom):

- Above ground biomass and density temporal assessment
- Tree height, diameter at breast height (DBH) and stem density temporal assessment
- Pneumatophores height, diameter, and density temporal assessment
- Seedling height and density temporal assessment.

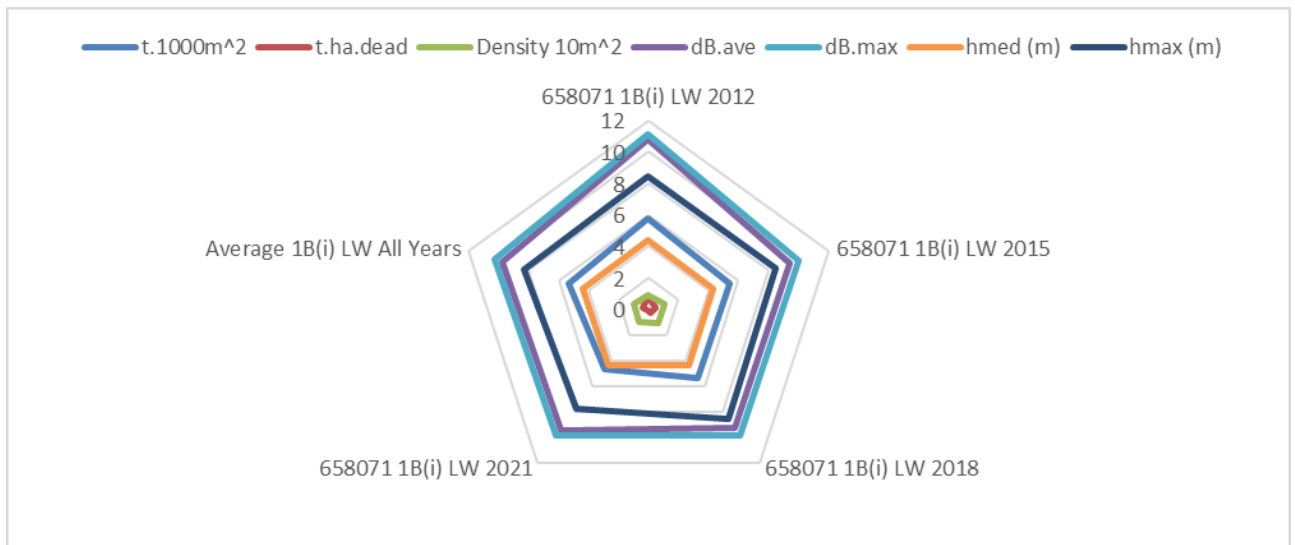


Figure 2. Structural changes over the years for Site 658071 in comparison to average of all sites of vegetation community type 1B(i) by structural formations. The graph indices: t.1000m² is the tonne of live biomass (tonnes) in 1000m square; t.ha.dead is the dead biomass (tonnes) in a hectare; Density 10m² is the number of trees in 10m square; dB.ave is the average diameter at breast height in centimetres; dB.max is the maximum diameter at breast height in centimetres; hmed (m) is the median tree height (meters); hmax (m) is the maximum tree height (meters).

Table 1. Queensland Biodiversity Ecological Information System (QBEIS) temporal assessment for site 658071

Date	13.08.2012	10.08.2015	19.12.2018	30.08.2021
E Spp.				
T1 Spp.	<i>Avicennia marina</i> subsp. <i>australasica</i>	<i>Avicennia marina</i> subsp. <i>australasica</i>	<i>Avicennia marina</i> subsp. <i>australasica</i>	<i>Avicennia marina</i> subsp. <i>australasica</i>
T1 Med Canopy Height	7.5	7.5	7.5	7.5
T1 Range low	7	7	7	7
T1 Range High	8	8	8	8
T1 Crown Cover	35	35	42	28
T1 Stem Count	4	4	4	4
T2 Spp.	<i>Avicennia marina</i> subsp. <i>australasica</i> ; <i>Bruguiera gymnorhiza</i>	<i>Avicennia marina</i> subsp. <i>australasica</i> ; <i>Bruguiera gymnorhiza</i>	<i>Avicennia marina</i> subsp. <i>australasica</i> ; <i>Bruguiera gymnorhiza</i>	<i>Avicennia marina</i> subsp. <i>australasica</i> ; <i>Bruguiera gymnorhiza</i> . Dead tree
T2 Med Canopy Height	3.5	4.5	4.5	4.5
T2 Range low	3	4	4	4
T2 Range high	4	5	5	5
T2 Crown Cover	15	15	15	18
T2 stem count	2; 5	10; 15	10; 15	12; 5; 1
S1 Spp.	<i>Avicennia marina</i> subsp. <i>australasica</i> ;	<i>Avicennia marina</i> subsp. <i>australasica</i> ;	<i>Avicennia marina</i> subsp. <i>australasica</i> ;	<i>Avicennia marina</i> subsp. <i>australasica</i> ;

	<i>Bruguiera gymnorhiza</i>	<i>Bruguiera gymnorhiza</i>	<i>Bruguiera gymnorhiza</i>	<i>Bruguiera gymnorhiza</i> . <i>Dead tree</i>
nmjhS1 Med Canopy Height	3.5	3.5	3.5	3.5
S1 Range low	3	3	3	3
S1 Range high	4	4	4	4
S1 Crown Cover	30	30	30	20
S1 stem count	9; 10	25; 5	25; 5	26; 8; 2
S2 Spp.	<i>Bruguiera gymnorhiza</i>	<i>Bruguiera gymnorhiza</i>	<i>Bruguiera gymnorhiza</i>	<i>Bruguiera gymnorhiza</i>
S2 Med Canopy Height	2.5	2.5	2.5	2.5
S2 Range low	2	2	2	2
S2 Range high	3	3	3	3
S2 Crown Cover	2	2	2	4
S2 stem count				
G Spp.	<i>None recorded</i>	<i>None recorded</i>	<i>Avicennia marina</i> subsp. <i>australasica</i> ; <i>Bruguiera gymnorhiza</i>	<i>Avicennia marina</i> subsp. <i>australasica</i> ; <i>Bruguiera gymnorhiza</i>
G Med Canopy Height			0.2	0.3
G Range low			0.1	0.1
G Range high			0.3	1.0
G Cover			5	4
Individual Covers			4; 1	4; 1

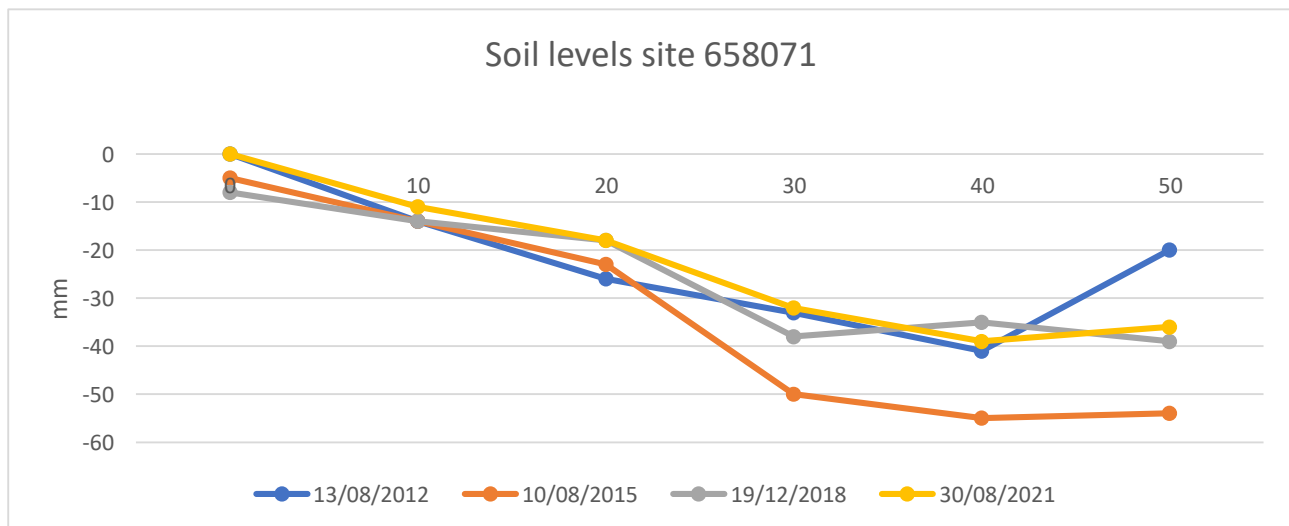


Figure 3. Soil surface elevation measurements (mm) are taken across the QBEIS sites using dumpy level.

Summary

1. No change in species composition over the years.
2. Slight change in T2 height with relatively large increase in stem count both of *Avicennia marina* subsp. *australasica* and *Bruguiera gymnorhiza*.
3. Large change in tree heights and DBH resulting in 7% reduction in site above ground biomass.
4. Over three-fold reduction in the proportion of dead to live biomass within the site.
5. Pneumatophores height reduced overall. That reduction in pneumatophores height potentially reflecting lower inundation levels.
6. Seedlings were only observed during the 2015 survey in the sampled quadrats but were present in 2018 and 2021 across the site.
7. Soil levels have accreted at one end of the transect and eroded at the other end.



Figure 4. Photograph of Site 658071 *Avicennia marina* subsp. *australasica* community type 1B(i) Low Woodland.