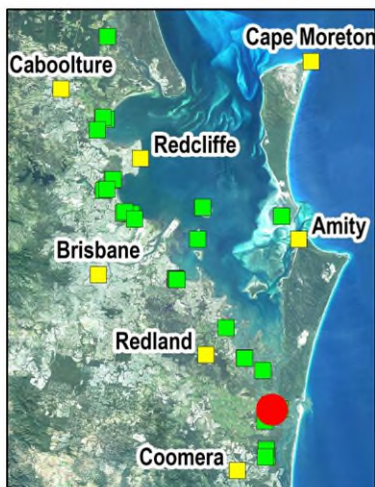
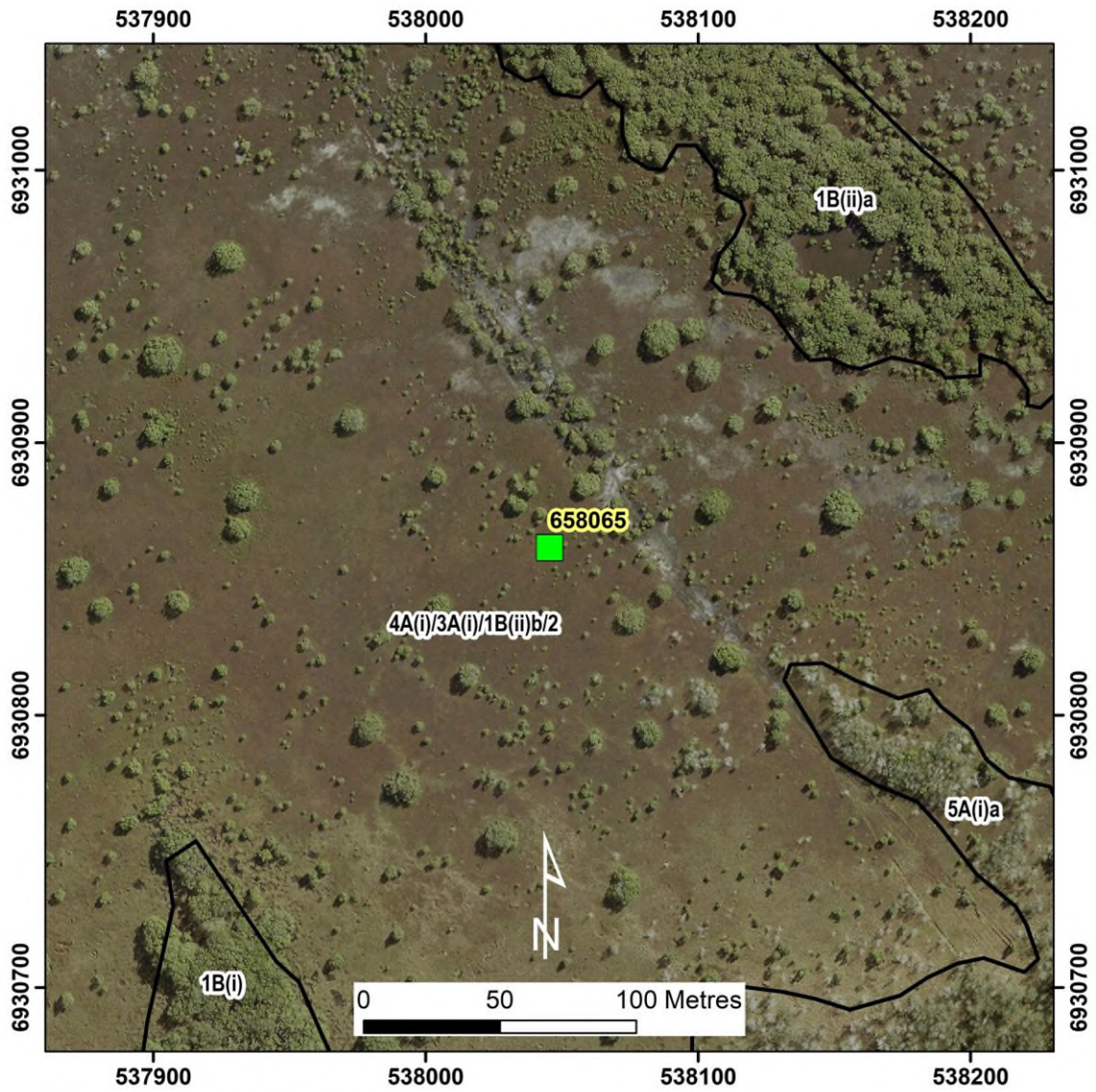


Eden Island (site ID = 658065) Saltmarsh and Marine Couch



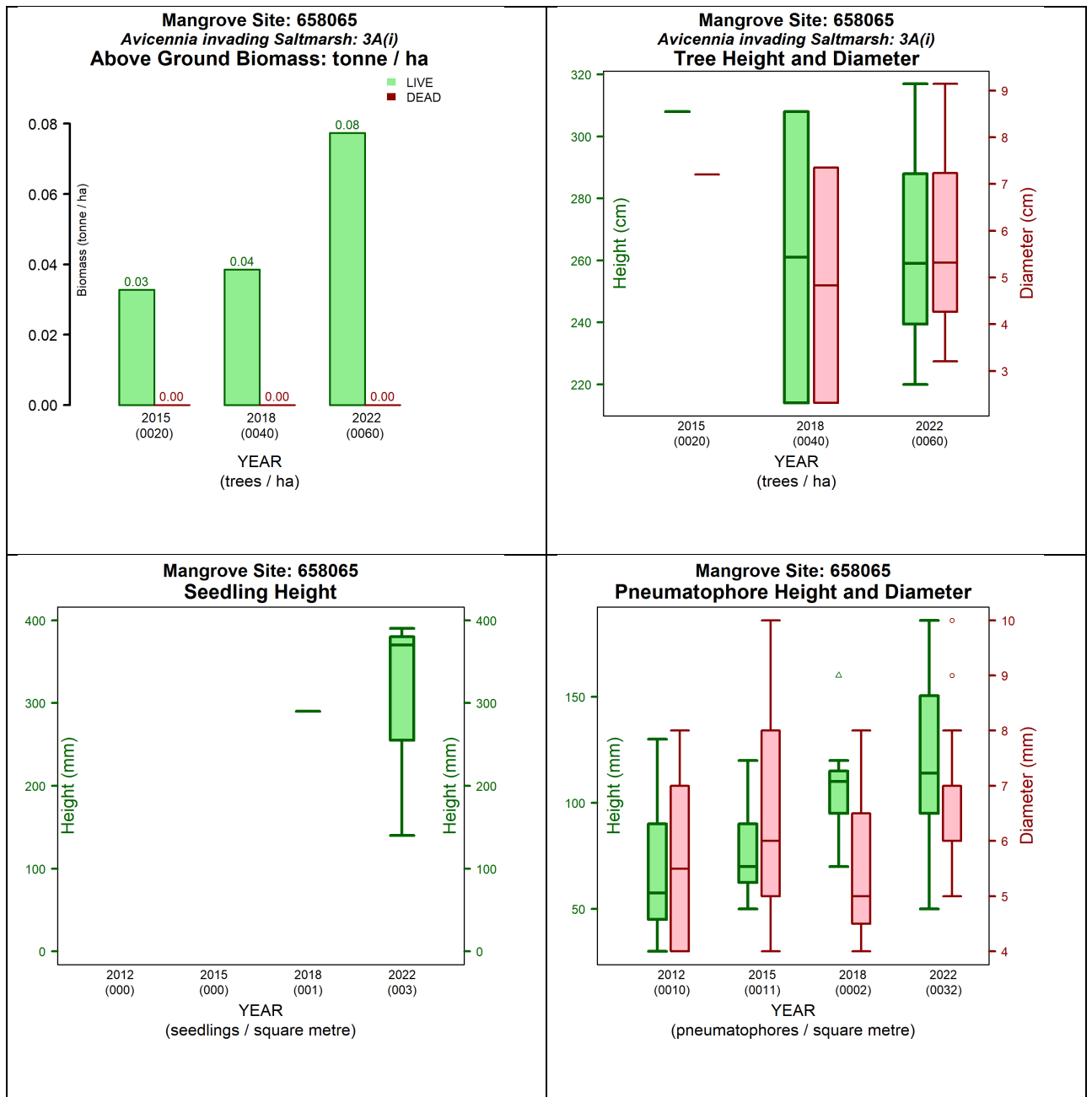


Figure 1. Measurements at site 658065 between 2012 and 2022 (left to right and top to bottom):

- Above ground biomass and density temporal assessment
- Tree height, diameter at breast height (DBH) and stem density temporal assessment
- Pneumatophores height, diameter, and density temporal assessment
- Seedling height and density temporal assessment.

Table 1. Queensland Biodiversity Ecological Information System (QBEIS) temporal assessment for site 658065.

Date	31.07.2012	27.07.2015	23.10.2018	11.04.2022
E Spp.				
T1 Spp.		<i>Avicennia marina</i> subsp. <i>australasica</i>	<i>Avicennia marina</i> subsp. <i>australasica</i>	<i>Avicennia marina</i> subsp. <i>australasica</i>
T1 Med Canopy Height		3.1	3.1	3.0
T1 Range low		3.1	3.1	2.0
T1 Range High		3.1	3.1	3.0
T1 Crown Cover		3	4	6
T1 Stem Count		1	2	10
T2 Spp.				
T2 Med Canopy Height				
T2 Range low				
T2 Range high				
T2 Crown Cover				
T2 stem count				
S1 Spp.	<i>Avicennia marina</i> subsp. <i>australasica</i>	<i>Avicennia marina</i> subsp. <i>australasica</i>	<i>Avicennia marina</i> subsp. <i>australasica</i>	<i>Avicennia marina</i> subsp. <i>australasica</i>
S1 Med Canopy Height	1.3	1.8	1.8	1.8
S1 Range low	1.3	1.5	1.5	1.5
S1 Range high	1.3	1.8	2	2
S1 Crown Cover	2	10	10	12
S1 stem count		10	10	6
S2 Spp.	<i>Avicennia marina</i> subsp. <i>australasica</i>	<i>Avicennia marina</i> subsp. <i>australasica</i>	<i>Avicennia marina</i> subsp. <i>australasica</i>	<i>Avicennia marina</i> subsp. <i>australasica</i>
S2 Med Canopy Height	0.6	1	1	1
S2 Range low	0.5	0.5	0.5	0.5
S2 Range high	1	1.2	1.2	1.2
S2 Crown Cover	1	5	5	10

S2 stem count	1	?	?	7
G Spp.	<i>Salicornia quinqueflora</i> subsp. <i>Quinqueflora</i> ; <i>Sporobolus virginicus</i>	<i>Salicornia quinqueflora</i> subsp. <i>Quinqueflora</i> ; <i>Sporobolus virginicus</i> ; <i>Suaeda australis</i> ; <i>Avicennia marina</i> subsp. <i>australasica</i>	<i>Salicornia quinqueflora</i> subsp. <i>Quinqueflora</i> ; <i>Sporobolus virginicus</i> ; <i>Suaeda australis</i> ; <i>Avicennia marina</i> subsp. <i>australasica</i>	<i>Salicornia quinqueflora</i> subsp. <i>Quinqueflora</i> ; <i>Sporobolus virginicus</i> ; <i>Suaeda australis</i> ; <i>Avicennia marina</i> subsp. <i>australasica</i> ; <i>Fimbristylis polytrichoides</i>
G Med Canopy Height	0.15	0.2	0.2	0.2
G Range low	0.1	0.1	0.1	0.1
G Range high	0.3	0.3	0.3	0.3
G Cover	97	88	88	93
Individual Covers	93; 4	72; 12; 4; +	88; +; +; +	90; +; 3; +; +

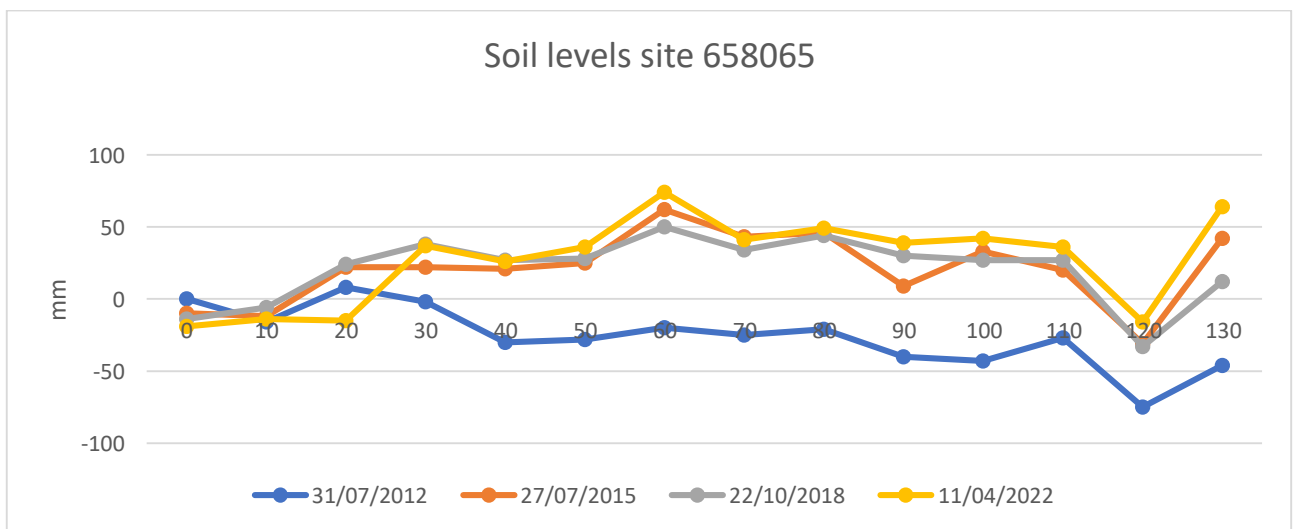


Figure 3. Soil surface elevation measurements (mm) are taken across the QBEIS sites using a dumpy level.

Summary

1. T1 with encroachment of *Avicennia marina* subsp. *australasica* in 2015, 2018 and 2022; S1 layers with *Avicennia marina* subsp. *australasica*; Ground layer contains *Salicornia quinqueflora* subsp. *quinqueflora*; *Sporobolus virginicus*; and in 2015 and 2018 also *Suaeda australis*; *Avicennia marina* subsp. *australasica* and in 2022 also *Fimbristylis polytrichoides*.
2. T1, S1 and S2 tree and shrub heights and cover have increased; Ground layer height has increased slightly, and ground cover has reduced slightly.

3. Pneumatophore mean height has increased and reduced in range while mean girth has reduced in measure and in range over the years.
4. No seedlings have been recorded over the years.
5. Soil max range level has fluctuated to 83-93-83mm with erosion of up to 14mm and accretion of 4mm
6. Soil levels have accreted over the period.



Figure 4. Photograph of Site 658065 Saltmarsh and Marine Couch, communities 3A(i) and 4A(i).