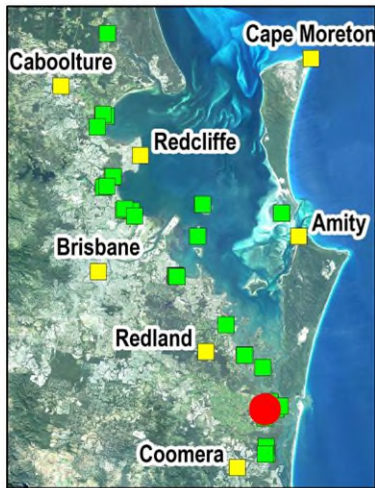
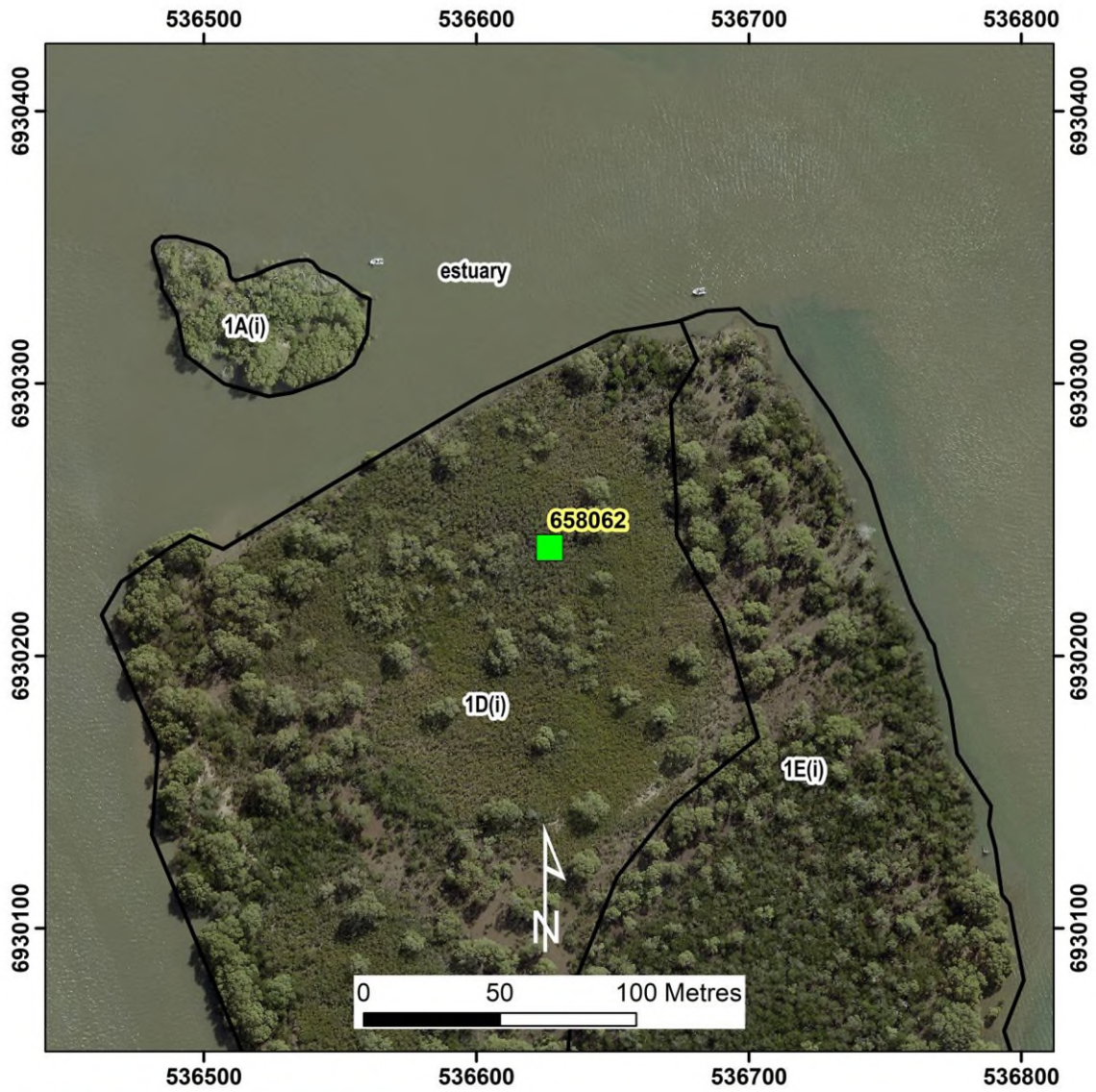


Un-named Island south of Tabby Tabby (site ID = 658062) Closed Shrubland



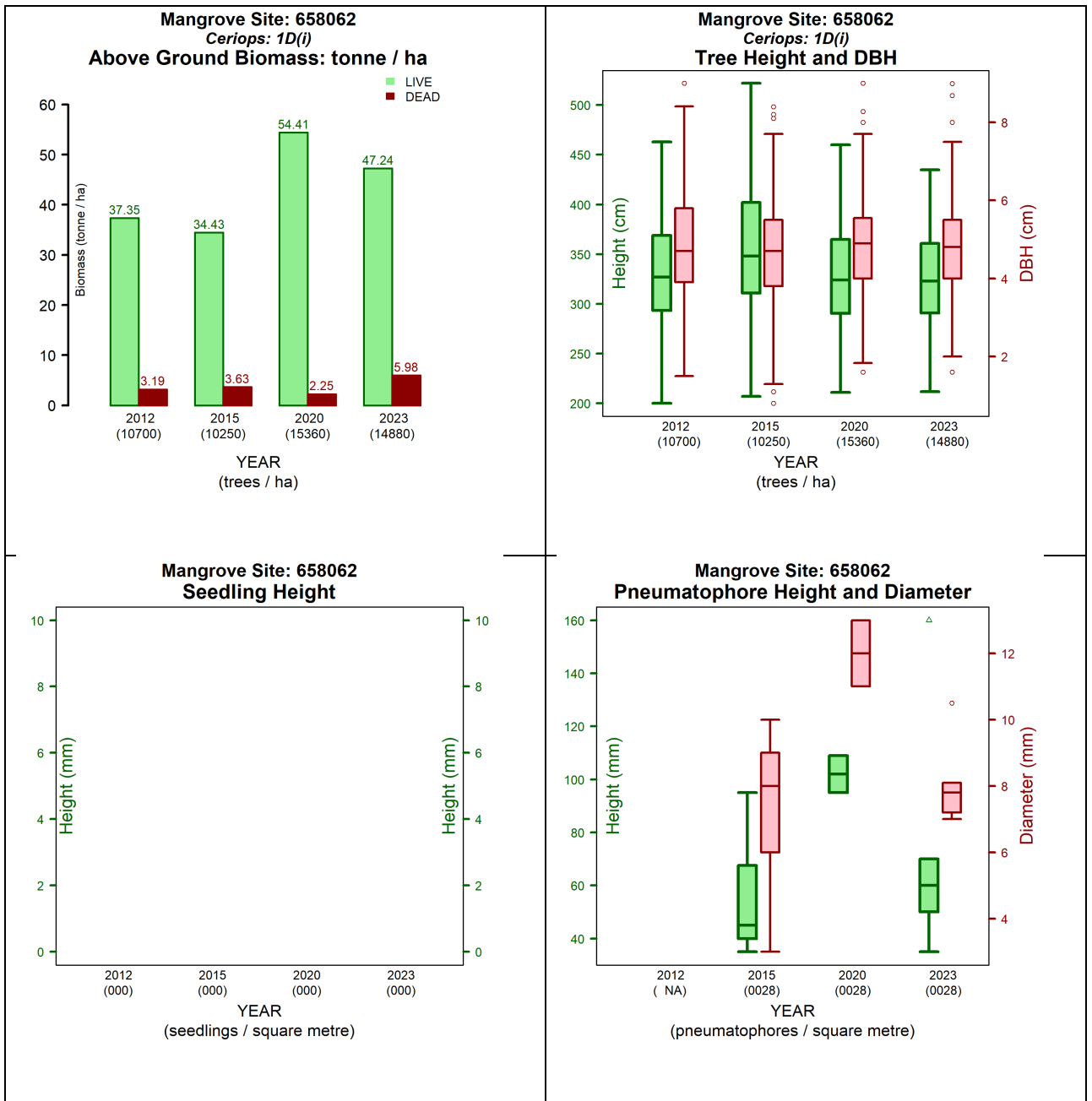


Figure 1. Measurements at site 658062 between 2012 and 2023 (left to right and top to bottom):

- Above ground biomass and density temporal assessment
- Tree height, diameter at breast height (DBH) and stem density temporal assessment
- Pneumatophores height, diameter, and density temporal assessment
- Seedling height and density temporal assessment.

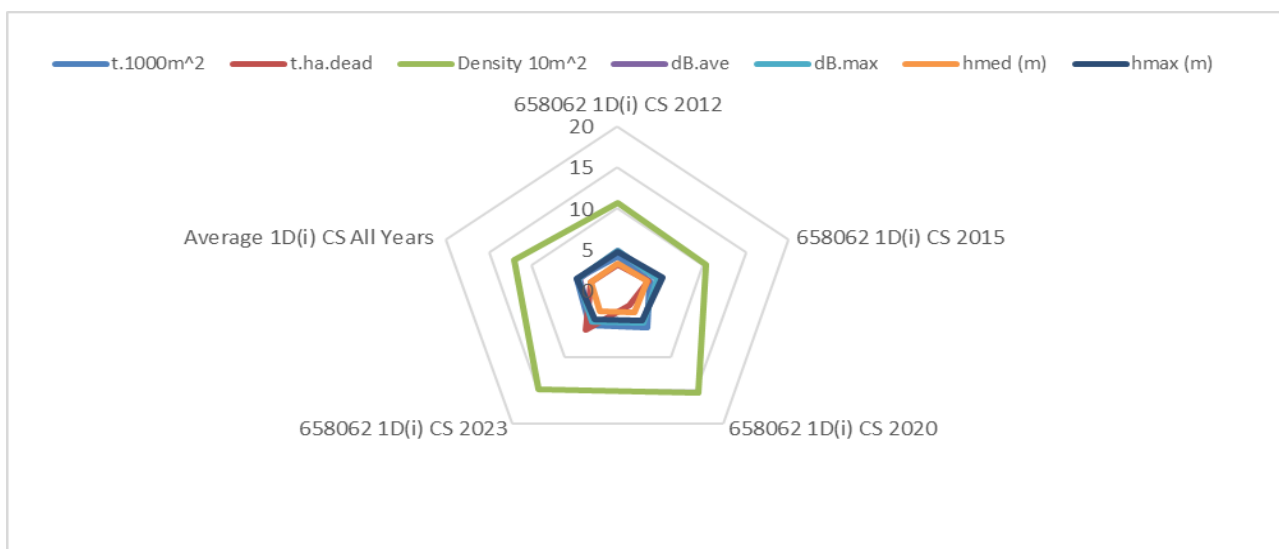


Figure 2. Structural changes over the years for Site 658062 in comparison to average of all sites of vegetation community type 1D(i) by structural formations. The graph indices: t.1000m² is the live biomass (tonnes) in a 1000m square; t.ha.dead is the dead biomass (tonnes) in a hectare; Density 10m² is the number of trees in 10m square; dB.ave is the average diameter at breast height in centimetres; dB.max is the maximum diameter at breast height in centimetres; hmed (m) is the median tree height (meters); hmax (m) is the maximum tree height (meters).

Table 1. Queensland Biodiversity Ecological Information System (QBEIS) temporal assessment for site 658062.

Date	16.04.2012	14.04.2015	16.06.2020	14.04.2023
E Spp.				
T1 Spp.	<i>Ceriops australis</i>	<i>Ceriops australis</i> ; Dead tree	<i>Ceriops australis</i> ; Dead tree	<i>Ceriops australis</i> ; Dead tree
T1 Med Canopy Height	3	3	3.5	3.5
T1 Range low	3	3	3	3
T1 Range High	3.5	3.5	4	4
T1 Crown Cover	84	65	58	58
T1 Stem Count	187	126, 32	121; 24	92; 14
T2 Spp.				
T2 Med Canopy Height				
T2 Range low				
T2 Range high				
T2 Crown Cover				
T2 stem count				
S1 Spp.	<i>Ceriops australis</i> ; <i>Aegiceras corniculatum</i>	<i>Ceriops australis</i> ; <i>Aegiceras corniculatum</i>	<i>Ceriops australis</i> ; <i>Aegiceras corniculatum</i>	<i>Ceriops australis</i> ; <i>Aegiceras corniculatum</i>
S1 Med Canopy Height	1.5	1.5	2.5	2.5
S1 Range low	1	1	2	2
S1 Range high	2	2.5	3	3
S1 Crown Cover	12	12	12	

				8
S1 stem count	29; 8	10, 2	46	22
S2 Spp.			<i>Ceriops australis</i> ; <i>Aegiceras corniculatum</i>	<i>Ceriops australis</i> ; <i>Aegiceras corniculatum</i>
S2 Med Canopy Height			1.2	1.2
S2 Range low			1	1
S2 Range high			1.8	1.8
S2 Crown Cover			2	2
S2 stem count			46; 7	34; 2
G Spp.	<i>Ceriops australis</i>	<i>Ceriops australis</i>	<i>Aegiceras corniculatum</i>	<i>Ceriops australis</i>
G Med Canopy Height	0.1	0.1	0.1	0.1
G Range low	0.1	0.1	0.1	0.1
G Range high	0.1	0.1	0.1	0.1
G Cover	+	+	+	+
Individual Covers	+	+	+	+

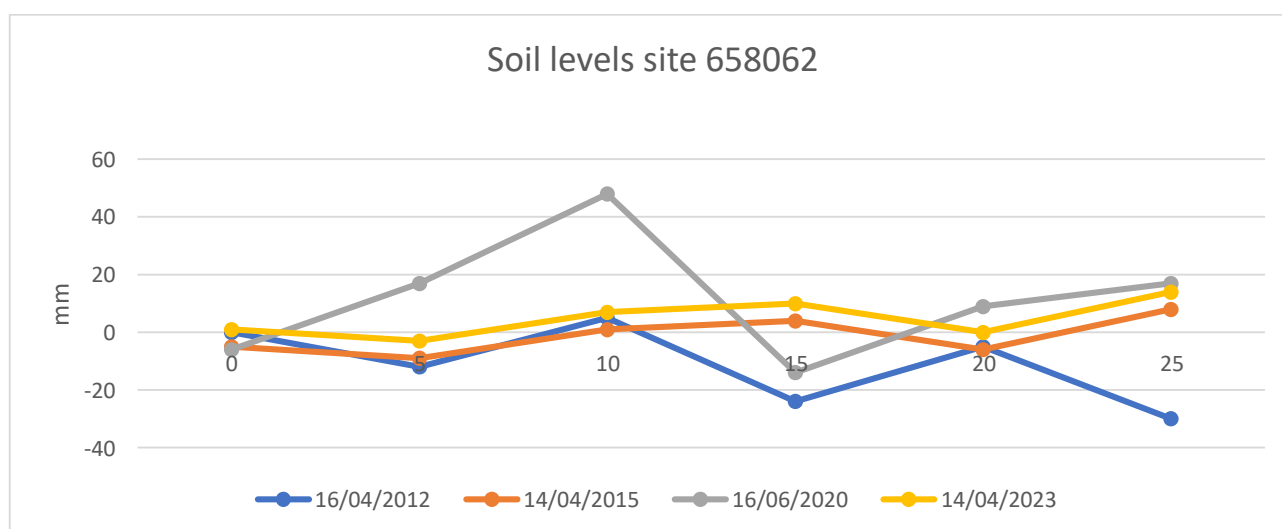


Figure 3. Soil surface elevation measurements (mm) are taken across the QBEIS sites using dumpy level.

Summary

1. T1 layer with living *Ceriops australis* and some dead trees, S1 with *Ceriops australis* and I and ground layer changed from *Ceriops australis* to *Aegiceras corniculatum*.
2. T1 tree increased (0.5m) in height and reduced in density; S1 and S2 increased in height (1m) and in densities; Ground height and cover was stable with changes in species composition.
3. Mean tree heights and mean DBH have been stable over the years. Densities increased by 43% leading to an increase of 39.7% in above ground biomass in the site.

4. Fluctuation (from 7.6% in 2012, 9.5% in 2015 to 4% in 2020) in the proportion of dead to live biomass within the site.
5. Pneumatophore mean height and densities fluctuated over the years whereas none were recorded in 2012.
6. No seedlings have been recorded over the years in the quadrats but are present during all years across the site.
7. Soil max range level across the plot have fluctuated over the years.
8. Soil levels over the period have accreted.



Figure 4. Photograph of Site 658062 *Ceriops australis* community type 1D(i) Closed Shrubland.